

## Propranolol on Lux 5 µm Cellulose-1 by Chiral SFC with MeOH dissolution solvent

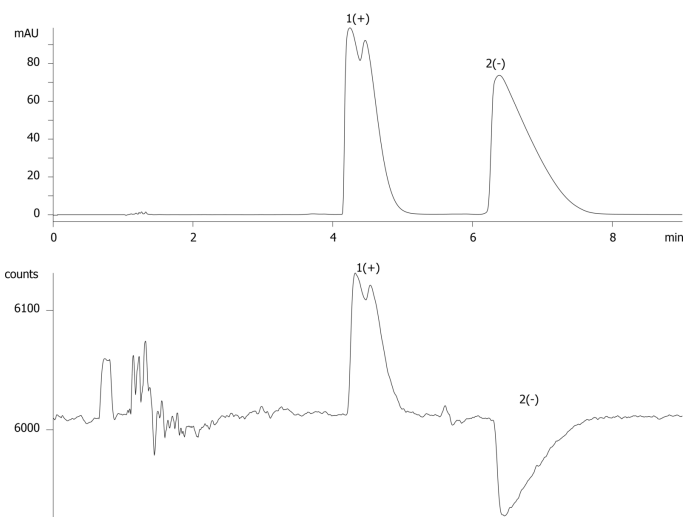
**Column:** Lux® 5 µm Cellulose-1, LC Column 250 x 4.6 mm, Ea  
**Dimensions:** 250 x 4.6 mm ID  
**Order No:** 00G-4459-E0  
**Elution Type:** Isocratic  
**Eluent A:** Methanol with 0.1% DEA  
**Eluent B:** Carbon Dioxide  
**Gradient**

Step No.	Time (min)	Pct A	Pct B
1	0	25	75

**Profile:**  
**Flow Rate:** 2.5 mL/min  
**Col. Temp.:** 35 °C  
**Detection:** Laser Polarimeter @ 220 nm (ambient)  
**Analyst Note:** Sample was dissolved in Methanol.



Products used in this application:



### ANALYTES:

- 1 Propranolol
- 2 Propranolol

