

# HPLC Application

ID No.: 18987

## NSAIDS on Luna HILIC 5 µm by SFC

**Column:** Luna® 5 µm HILIC 200 Å, LC Column 250 x 4.6 mm, Ea

**Dimensions:** 250 x 4.6 mm ID

**Order No:** 00G-4450-E0

**Elution Type:** Gradient

**Eluent A:** Methanol

**Eluent B:** Carbon Dioxide

Gradient Profile:	Step No.	Time (min)	Pct A	Pct B
	1	0	5	95
	2	5.5	50	50
	3	7.5	50	50

**Flow Rate:** 3 mL/min

**Col. Temp.:** 40 °C

**Detection:** UV-Vis Abs.-Fixed Wave. (UV) @ 254 nm (40 °C)

**Detector Info:** Thar Discovery Series, Super Pure SFC instrument provided courtesy of Thar Technologies

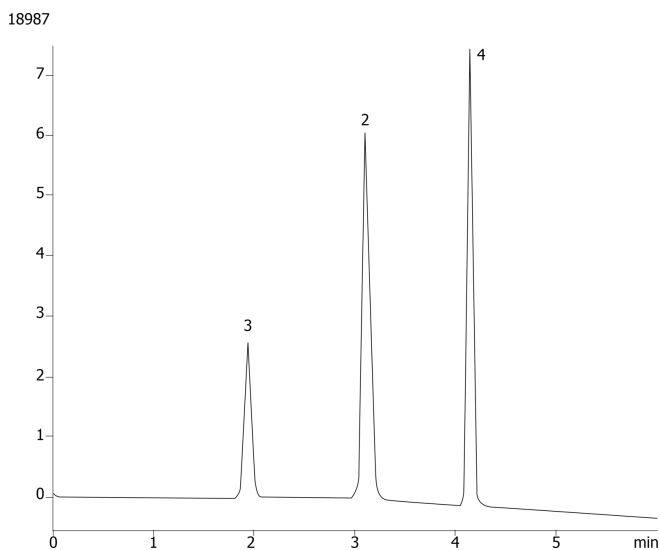
**Analyst Note:** SecurityGuard™ Guard Cartridge System extends column lifetime.

- SecurityGuard Cartridges, Silica 4 x 3.0mm, 10/Pk Part No.: AJ0-4348

- Holder Part No.: KJ0-4282



Products used in this application:



### ANALYTES:

- 1 Naproxen
- 2 Ketoprofen
- 3 Caffeine
- 4 Indoprofen

