

HPLC Application

ID No.: 19104

Impact of Flow Rate and particle size on a Chiral Separation: 5um at 2.5 mL/min

Column: Lux[®] 5 μ m Cellulose-2, LC Column 250 x 4.6 mm, Ea

Dimensions: 250 x 4.6 mm ID

Order No: 00G-4457-E0

Elution Type: Isocratic

Eluent A: Methanol with 0.1% DEA

Eluent B: Carbon Dioxide

Gradient Profile:	Step No.	Time (min)	Pct A	Pct B
	1	0	25	75

Flow Rate: 2.5 mL/min

Col. Temp.: 35 °C

Detection: UV-Vis Abs.-Fixed Wave. (UV) @ 254 nm (35 °C)

Detector Info: PDA

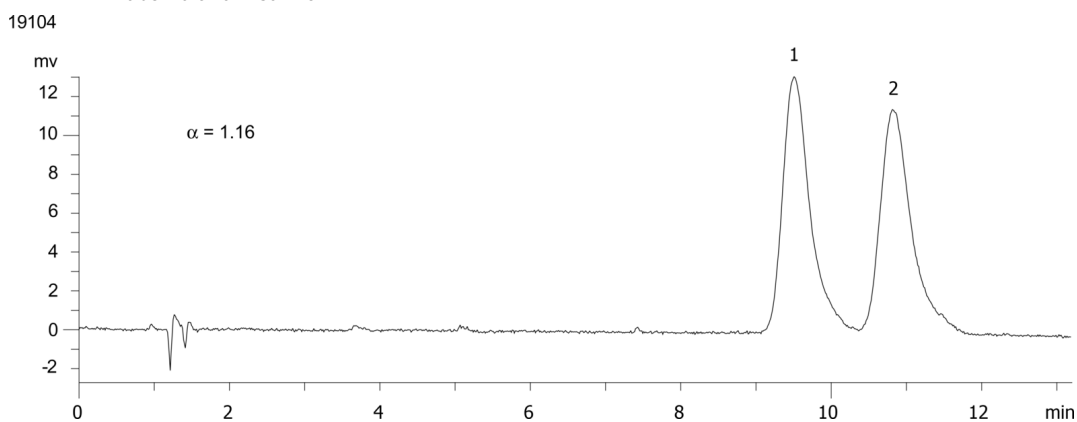
Analyst Note: SecurityGuard[™] Guard Cartridge System extends column lifetime.

- SecurityGuard Cartridges, Silica 4 x 3.0mm, 10/Pk Part No.: AJ0-4348

- Holder Part No.: KJ0-4282



Products used in this application:



ANALYTES:

1 Propranolol

