

# HPLC Application

ID No.: 19135

## Hu IgG2 k Lys-C & Asp-N Digest on Jupite C18 3u

**Column:** Jupiter<sup>®</sup> 3  $\mu$ m C18 300 Å, LC Column 150 x 2 mm, Ea

**Dimensions:** 150 x 2 mm ID

**Order No:** 00F-4263-B0

**Elution Type:** Gradient

**Eluent A:** 0.1% TFA and 2% Acetonitrile in Water

**Eluent B:** 0.085% TFA in Acetonitrile

| Gradient Profile: | Step No. | Time (min) | Pct A | Pct B |
|-------------------|----------|------------|-------|-------|
|                   | 1        | 2          | 98    | 2     |
|                   | 2        | 35         | 52    | 48    |
|                   | 3        | 40         | 30    | 70    |

**Flow Rate:** 1 mL/min

**Col. Temp.:** 25 °C

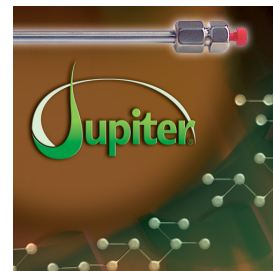
**Detection:** UV-Vis Abs.-Variable Wave.(UV) @ 214 nm (25 °C)

**Analyst Note:** SecurityGuard<sup>™</sup> Guard Cartridge System extends column lifetime.

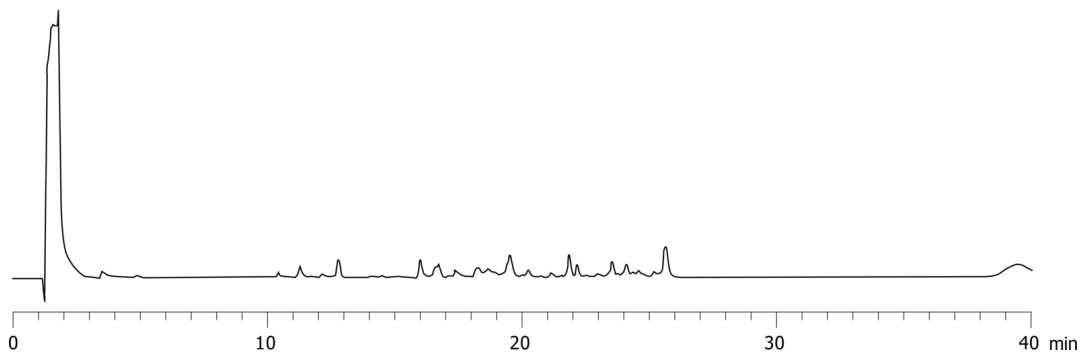
- SecurityGuard Cartridges, Widepore C18 4 x 2.0mm ID, 10/Pk Part No.: AJ0-4320

- Holder Part No.: KJ0-4282

19135



Products used in this application:



### ANALYTES:

- 1 Human IgG2 k Lys-C & Asp-N

