

# HPLC Application

ID No.: 19151

## Etozolin on Lux 5 $\mu$ Cellulose-4 250 x 4.6mm in RP with 60%CH<sub>3</sub>CN

**Column:** Lux® 5  $\mu$ m Cellulose-4, LC Column 250 x 4.6 mm, Ea

**Dimensions:** 250 x 4.6 mm ID

**Order No:** 00G-4491-E0

**Elution Type:** Isocratic

**Eluent A:** 20mM NH<sub>4</sub>HCO<sub>3</sub> + 0.1%DEA

**Eluent B:** CH<sub>3</sub>CN

Gradient Profile:	Step No.	Time (min)	Pct A	Pct B
	1	0	40	60

**Flow Rate:** 1 mL/min

**Col. Temp.:** 25 °C

**Detection:** UV-Vis Abs.-Variable Wave.(UV) @ 220 nm (ambient)

**Analyst Note:** SecurityGuard™ Guard Cartridge System extends column lifetime.

- SecurityGuard Cartridges, Lux Cellulose-4 4 x 3.0 mm, 10/Pk Part No.: AJ0-8627

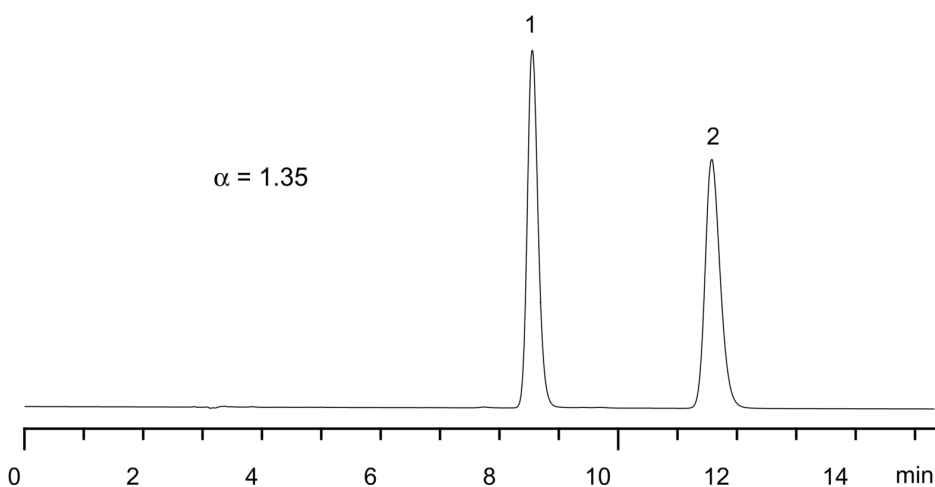
- Holder Part No.: KJ0-4282



Products used in this application:



19151



### ANALYTES:

**1** Etozolin

Retention Time: 8.56 min

**2** Etozolin

Retention Time: 11.58 min

