

HPLC Application

ID No.: 19228

USP 621: Allowable changes Column Diameter-4.6mm ID

Column: Luna® 5 µm C18(2) 100 Å, LC Column 150 x 4.6 mm, Ea

Dimensions: 150 x 4.6 mm ID

Order No: 00F-4252-E0

Elution Type: Isocratic

Eluent A: See analyst note

Gradient	Step No.	Time (min)	Pct A
Profile:	1	0	100

Flow Rate: 0.8 mL/min

Col. Temp.: ambient

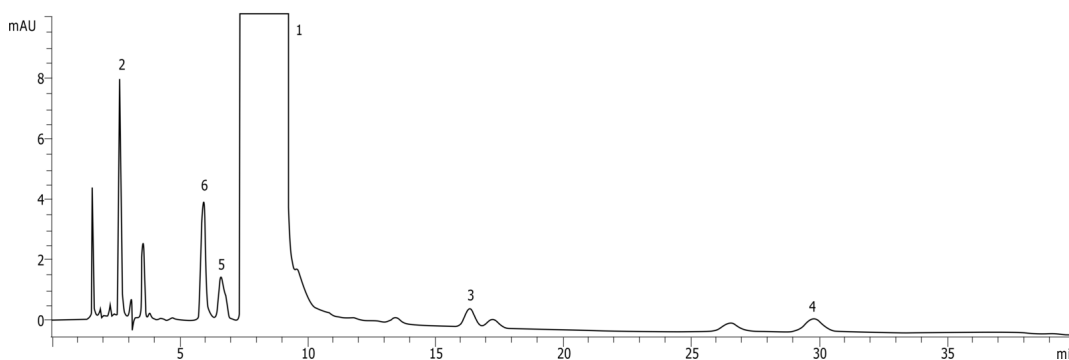
Detection: UV-Vis Abs.-Variable Wave.(UV) @ nm (ambient)

Analyst Note: Isocratic: 100% of 2.0g of Sodium Octanesulphonate + 0.8g of Tetrabutyl Ammonium Hydrogen Sulphate in 2L of 360ml Methanol + 40ml of THF+1600ml of 3.4g of potassium Dihydrogen Phosphate in 2L of water (pH adjusted to 3.0 using Phosphoric acid)

19228



Products used in this application:



ANALYTES:

- 1 Atenolol
- 2 Impurity B
- 3 Impurity F
- 4 Impurity G
- 5 Impurity I
- 6 Impurity J

