

## Chiral SFC Purification of Atenolol on Lux Cellulose-1

**Column:** Lux® 5 µm Cellulose-1, LC Column 250 x 21.2 mm, AXIA™ Packed, Ea

**Dimensions:** 250 x 21.2 mm ID

**Order No:** 00G-4459-P0-AX

**Elution Type:** Isocratic

**Eluent A:** 0.1% DEA in Methanol

**Eluent B:** 0.1% DEA in Carbon Dioxide

Gradient Profile:	Step No.	Time (min)	Pct A	Pct B
	1	10	25	75

**Flow Rate:** 50 mL/min

**Col. Temp.:** 37 °C

**Detection:** UV-Vis Abs.-Variable Wave.(UV) @ 254 nm (37 °C)

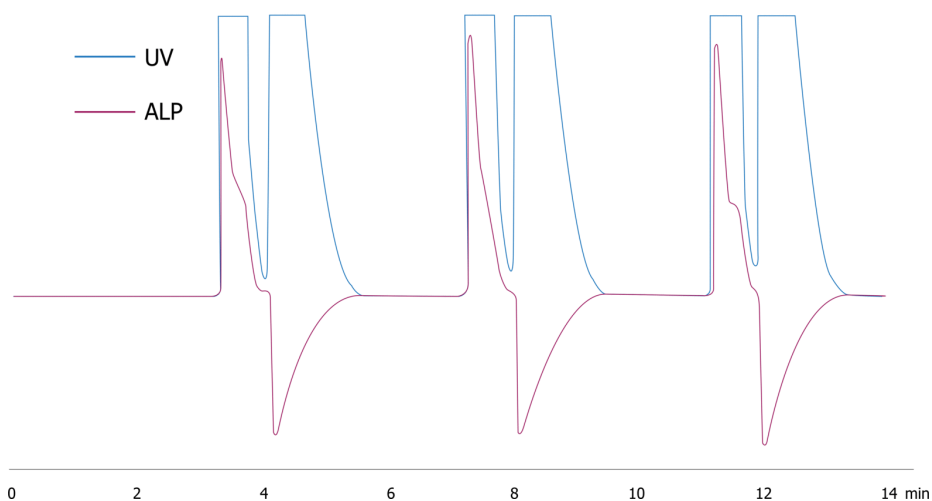
**Detector Info:** PDR Chiral ALP

**Analyst Note:** SecurityGuard™ Guard Cartridge System extends column lifetime.

- SecurityGuard PREP Cartridge, Lux Cellulose-1, 15 x 21.2mm ID, Ea Part No.: AJ0-8405

- Holder Part No.: AJ0-8223

19266



### ANALYTES:

1 Atenolol

Retention Time: 3 min

2 Atenolol

Retention Time: 4 min



Products used in this application:

