

HPLC Application

ID No.: 19325

Bisphenol A standard (5ug/L) analysis using Kinetex 2.6µm C18 50x4.6mm

Column: Kinetex[®] 2.6 µm C18 100 Å, LC Column 50 x 4.6 mm, Ea

Dimensions: 50 x 4.6 mm ID

Order No: 00B-4462-E0

Elution Type: Isocratic

Eluent A: Water

Eluent B: Acetonitrile

Gradient Profile:	Step No.	Time (min)	Pct A	Pct B
	1	0	35	65

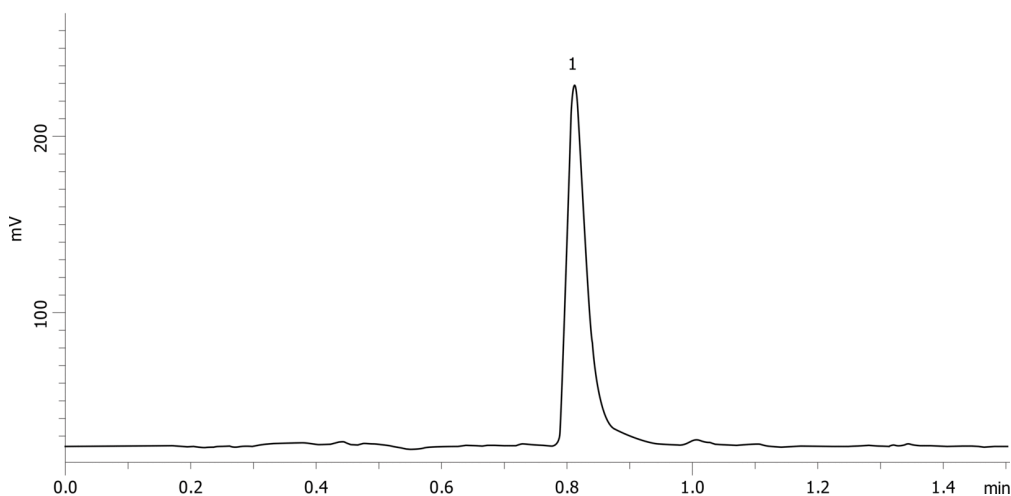
Flow Rate: 1.5 mL/min

Col. Temp.: ambient

Detection: Fluorescence (FLUOR) @ 230 nm (ambient)
19325



Products used in this application:



ANALYTES:

- 1 Bisphenol A
Retention Time: 0.8 min