

HPLC Application

ID No.: 19461

Bivalirudin Purification-Fraction 33.2 min

Column: Kinetex[®] 2.6 μ m C18 100 Å, LC Column 100 x 4.6 mm, Ea

Dimensions: 100 x 4.6 mm ID

Order No: 00D-4462-E0

Elution Type: Gradient

Eluent A: 0.1% TFA in Water

Eluent B: 0.1% TFA in ACN

Gradient Profile:	Step No.	Time (min)	Pct A	Pct B
	1	0	77	23
	2	8	69	31
	3	8.1	77	23
	4	11	77	23

Flow Rate: 1.85 mL/min

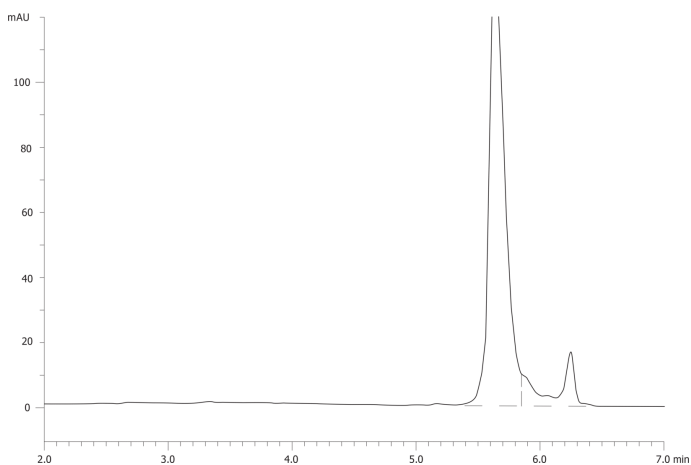
Col. Temp.: ambient

Detection: UV-Vis Abs.-Variable Wave.(UV) @ 220 nm (ambient)

19461



Products used in this application:



ANALYTES:

1 Bivalirudin

Retention Time: 5.64 min

2 rear impurities

Retention Time: 6.25 min

