

HPLC Application

ID No.: 19474

Pharmaceutical Mixture on Kinetex C18

Column: Kinetex[®] 2.6 μ m C18 100 \AA , LC Column 50 x 2.1 mm, Ea

Dimensions: 50 x 2.1 mm ID

Order No: 00B-4462-AN

Elution Type: Gradient

Eluent A: 0.1% Formic Acid in Water

Eluent B: 0.1% Formic Acid in AcCN

Gradient Profile:	Step No.	Time (min)	Pct A	Pct B
	1	0	95	5
	3	4	5	95
	4	0.2	95	5

Flow Rate: 0.8 mL/min

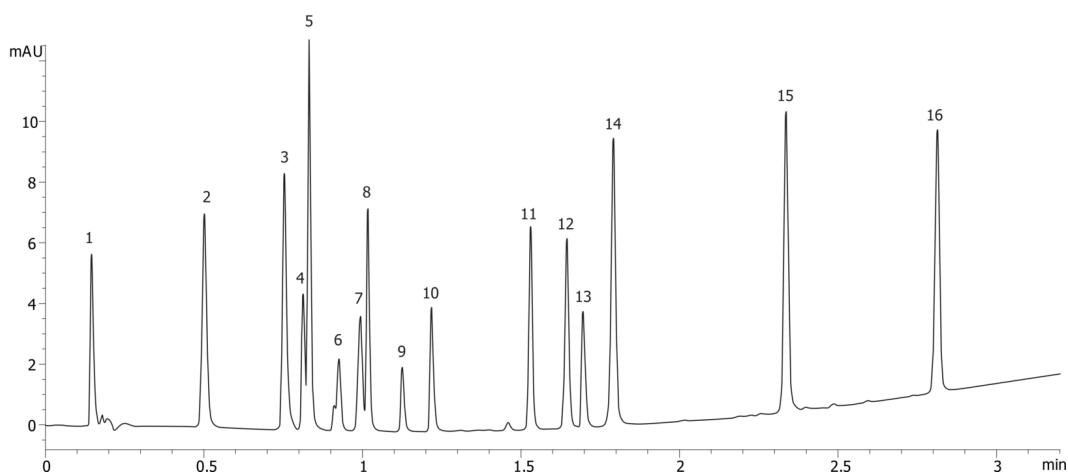
Col. Temp.: ambient

Detection: UV-Vis Abs.-Variable Wave.(UV) @ 254 nm (ambient)

19474



Products used in this application:



Pharmaceutical Mixture on Kinetex C18

ANALYTES:

- 1 Pyridine
- 2 Acetaminophen
- 3 Sulfathiazole
- 4 Pindolol
- 5 Quinidine
- 6 Benzyl alcohol
- 7 Phenol
- 8 Acebutolol
- 9 Chlorpheniramine
- 10 Triprolidine
- 11 Prednisolone
- 12 3-Methyl-4-nitrobenzoic acid
- 13 Nortriptyline
- 14 2-Hydroxy-5-methylbenzaldehyde
- 15 Diflunisal
- 16 Hexanophenone

