

HPLC Application

ID No.: 19562

USP Loratadine on Kinetex 2.6 μ m C8 150x4.60mm

Column: Kinetex[®] 2.6 μ m C8 100 Å, LC Column 150 x 4.6 mm, Ea

Dimensions: 150 x 4.6 mm ID

Order No: 00F-4497-E0

Elution Type: Isocratic

Eluent A: 31.5:31.5:36.8 Methanol:Acetonitrile:Solution A(1.74mg/mL Anhydrous Dibasic Potassium Phosphate)

Gradient	Step No.	Time (min)	Pct A
Profile:	1	15	100

Flow Rate: 1

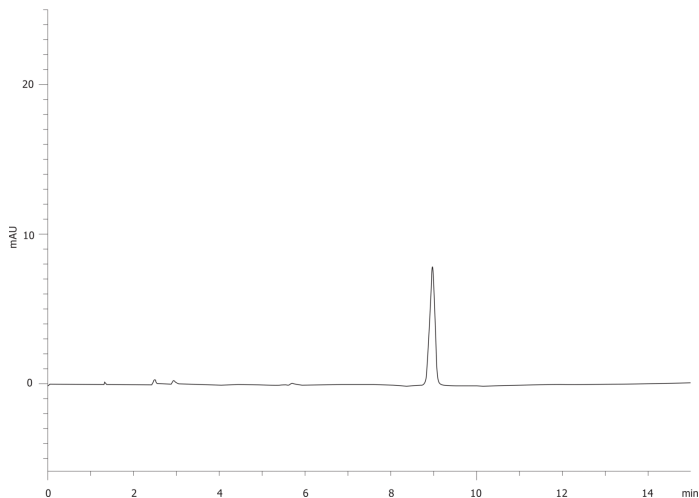
Col. Temp.: ambient

Detection: UV-Vis Abs.-Variable Wave.(UV) @ 254 nm (ambient)

19562



Products used in this application:



ANALYTES:

1 Loratadine

