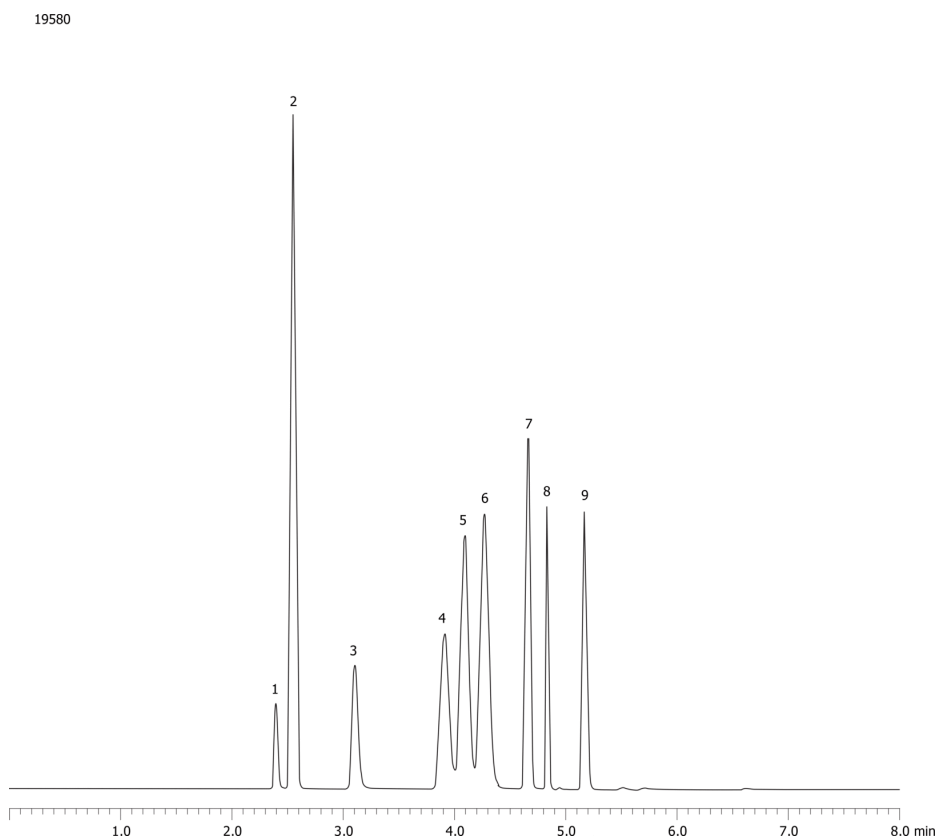


**Optimized Separation of Propanal from Blood Alcohols on ZB-BAC1, 30 x 0.53 x 3.00****Column:** Zebtron<sup>™</sup> ZB-BAC-1, GC Cap. Column 30 m x 0.53 mm x 3.00  $\mu$ m, Ea**Phase:** Proprietary Blood Alcohol Phase**Dimensions:** 30 meters x 0.53 mm x 3  $\mu$ m**Order No:** 7HK-G021-36**Oven Profile:** 30 °C Isothermal**Carrier Gas:** Ramp Flow Helium, 4 mL/min**Injection:** Headspace 30:1 1  $\mu$ L @ 180°C**Detection:** Flame Ionization (FID) (250°C)**Analyst Note:** Sample was 0.100% BAC in water, analyzed by headspace GC  
Run as a dual column setup with ZB-BAC2  
Ramped flow program was 4 mL/min. for 4.5 min. to 40 mL/min. at 80 mL/min.2 for rest of run.  
Liner was 2 mm. i.d. straight**Products used in this application:****ANALYTES:**

- 1 Methanol
- 2 Acetaldehyde
- 3 Ethanol
- 4 Isopropanol
- 5 Propanal
- 6 Acetone
- 7 tert-Butanol
- 8 n-Propanol
- 9 2-Butanol

©2005 Phenomenex Inc. All rights reserved.

For more information contact your Phenomenex Representative at [info@phenomenex.com](mailto:info@phenomenex.com)

Phenomenex products are available worldwide.

[www.phenomenex.com.cn](http://www.phenomenex.com.cn)[info@phenomenex.com](mailto:info@phenomenex.com)