

## Optimized Separation of Propanal from Blood Alcohols on ZB-BAC2, 30 x 0.53 x 2.00

**Column:** Zebtron™ ZB-BAC-2, GC Cap. Column 30 m x 0.53 mm x 2.00 μm, Ea

**Phase:** Proprietary Blood Alcohol Phase

**Dimensions:** 30 meters x 0.53 mm x 2 μm

**Order No:** 7HK-G022-32

**Oven Profile:** 30 °C Isothermal

**Carrier Gas:** Ramp Flow Helium, 4 mL/min

**Injection:** Headspace 30:1 1 μL @ 180°C

**Detection:** Flame Ionization (FID) (250°C)

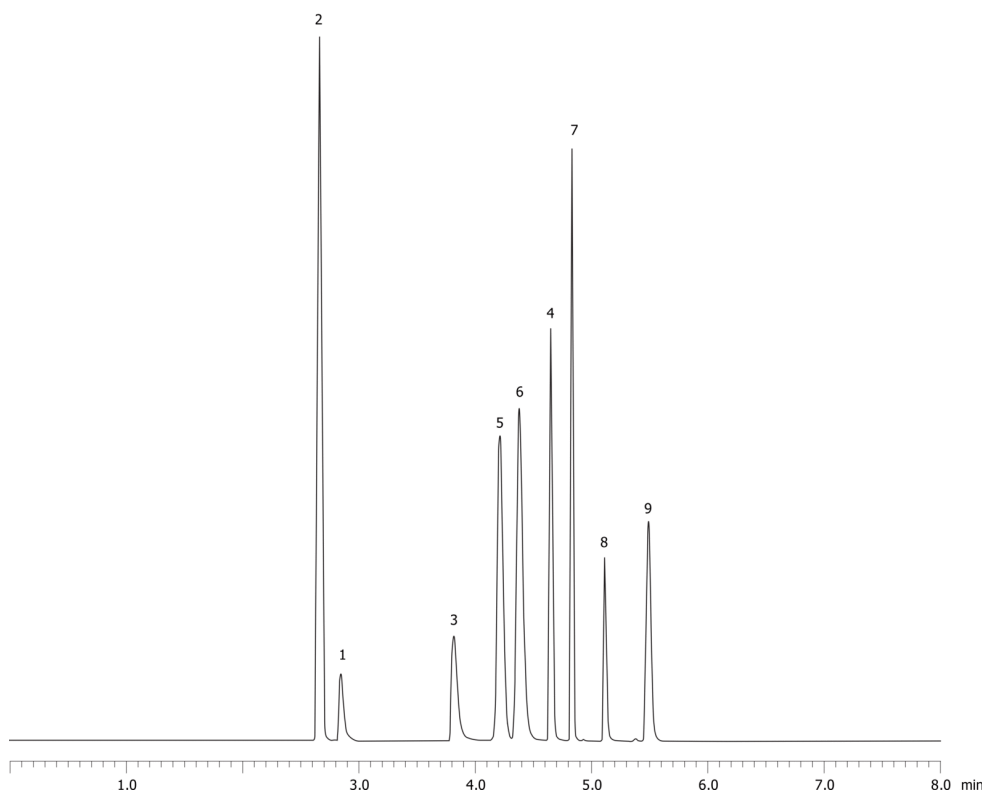
**Analyst Note:** Sample was 0.100% BAC in water, analyzed by headspace GC  
Run as a dual column setup with ZB-BAC1  
Ramped flow program was 4 mL/min. for 4.5 min. to 40 mL/min. at 80 mL/min.2 for rest of run.  
Liner was 2 mm. i.d. straight



Products used in this application:



19581



### ANALYTES:

- 1 Methanol
- 2 Acetaldehyde
- 3 Ethanol
- 4 Isopropanol
- 5 Propanal
- 6 Acetone
- 7 tert-Butanol
- 8 n-Propanol
- 9 2-Butanol

©2005 Phenomenex, Inc. All rights reserved.

For more information contact your Phenomenex Representative at [info@phenomenex.com](mailto:info@phenomenex.com)



Phenomenex products are available worldwide.

[www.phenomenex.com.cn](http://www.phenomenex.com.cn)

[info@phenomenex.com](mailto:info@phenomenex.com)