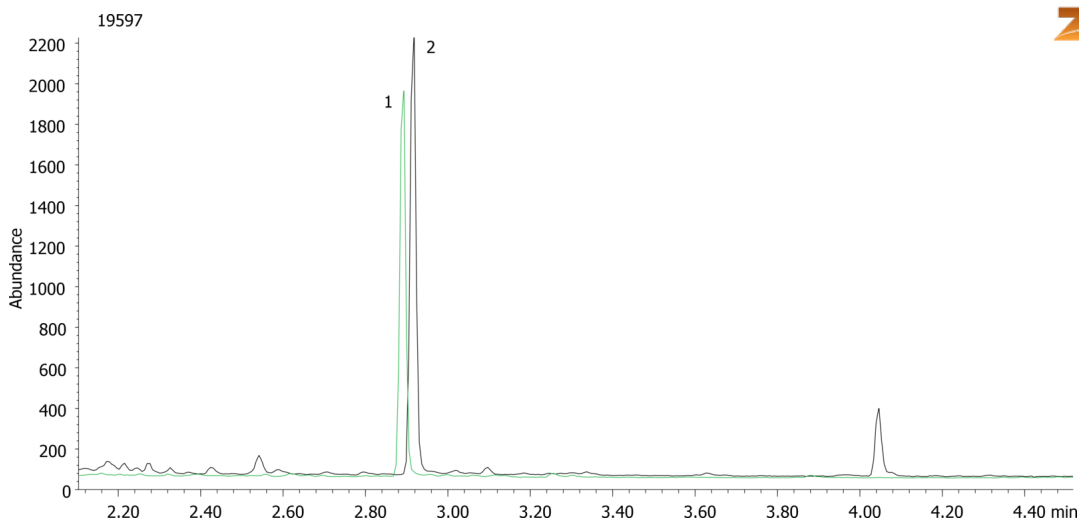


Carboxy-THC from urine using Strata-X-Drug B and Zebron Drug-1 10x0.18x0.18**Column:** Zebron[™] ZB-Drug-1, GC Cap. Column 10 m x 0.18 mm x 0.18 μ m, Ea**Phase:** Proprietary Drug Phase**Dimensions:** 10 meters x 0.18 mm x 0.18 μ m**Order No:** 7CD-G023-08**Oven Profile:** 220°C to 340°C @ 30°C/min**Carrier Gas:** Constant Flow Helium, 0.7 mL/min**Injection:** Split 10:1 1 μ L @ 280°C**Detection:** Mass Selective (MSD) (340°C)**Analyst Note:** Analytes are spiked into blank urine @ the SAMSHA cutoff level of 15ng/mL.

After elution from SPE sorbent the sample is blown down and then derivatized with BSTFA by heating @ 70°C for 20min.

**Products used in this application:****ANALYTES:****1** Carboxy-THC-d9

Retention Time: 2.9 min

2 Carboxy-THC

Retention Time: 2.92 min

