

Ibuprofen by HPLC on Luna 5um C18(2) 250x4.6mm

Column: Luna® 5 µm C18(2) 100 Å, LC Column 250 x 4.6 mm, Ea

Dimensions: 250 x 4.6 mm ID

Order No: 00G-4252-E0

Elution Type: Isocratic

Eluent A: 600:400 ACN:Water with 4g chloroacetic acid adjusted to pH 3.0 with ammonium hydroxide

Gradient

Profile:

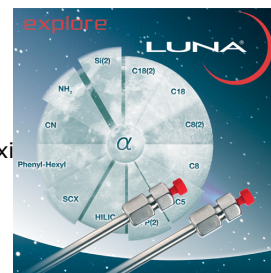
Step No.	Time (min)	Pct A
1	10	100

Flow Rate: 2 mL/min

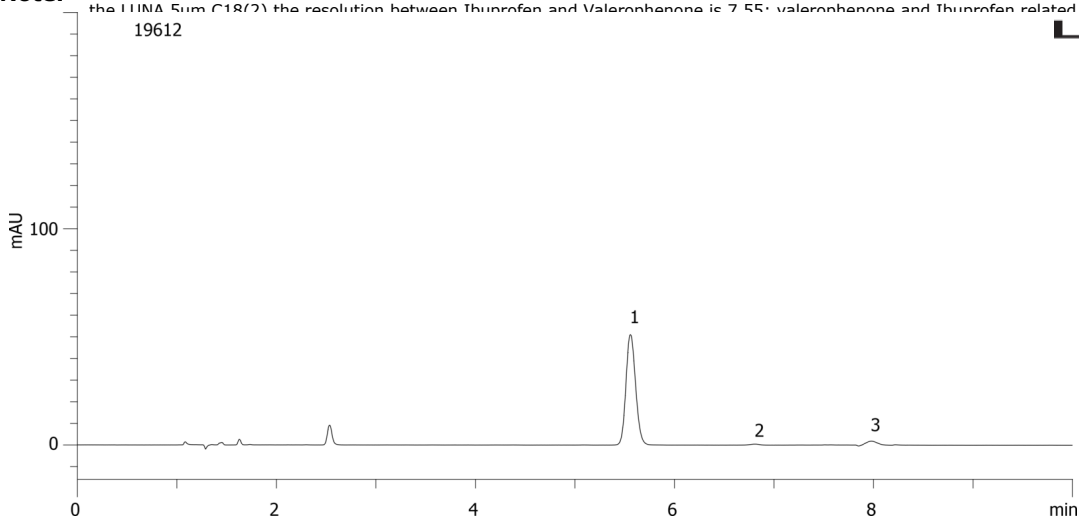
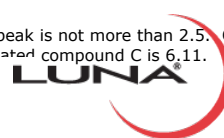
Col. Temp.: 30 °C

Detection: UV-Vis Abs.-Variable Wave.(UV) @ 254 nm (ambient)

Analyst Note: The USP Resolution requirement between any two peaks is not less than 2.5, and the tailing factor for any individual peak is not more than 2.5. On the LUNA 5um C18(2) the resolution between Ibuprofen and Valerophenone is 7.55; valerophenone and Ibuprofen related compound C is 6.11.



Products used in this application:



ANALYTES:

1 Ibuprofen

Retention Time: 5.557 min

2 Valerophenone

Retention Time: 6.812 min

3 Ibuprofen related compound C

Retention Time: 7.979 min

