

Humic Acids using Kinetex C8 50x2.1 mm on ABI LC-MS 4000

Column: Kinetex® 2.6 µm C8 100 Å, LC Column 50 x 2.1 mm, Ea

Dimensions: 50 x 2.1 mm ID

Order No: 00B-4497-AN

Elution Type: Gradient

Eluent A: 5mM Ammonium Acetate

Eluent B: Methanol

Gradient Profile:	Step No.	Time (min)	Pct A	Pct B
	1	0	85	15
	2	2	5	95
	3	6	5	95
	4	6.01	85	15

Flow Rate: 0.4 mL/min

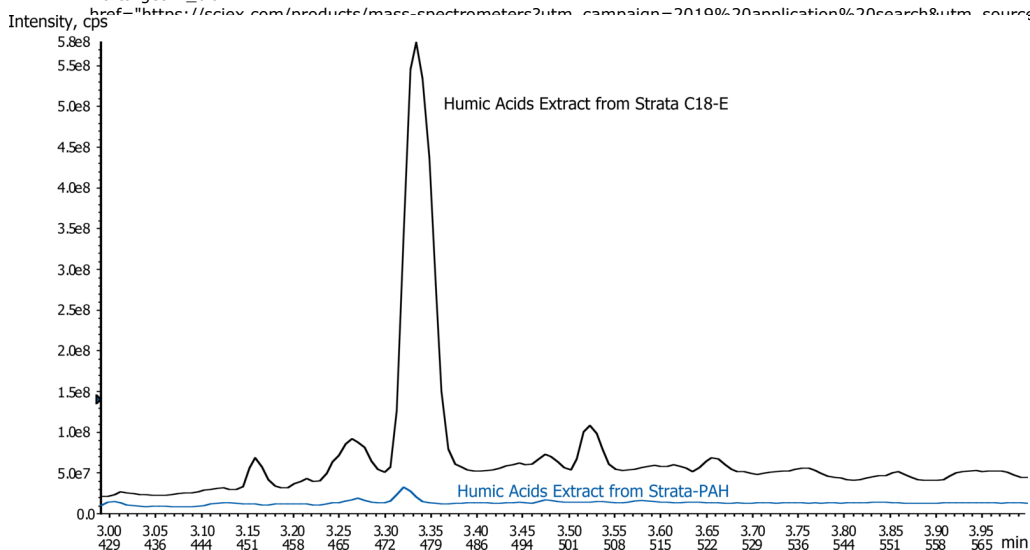
Col. Temp.: ambient

Detection: Mass Spectrometer (MS) @ 580.4 amu (ambient)

Detector Info: SCIEX<



Products used in this application:



ANALYTES:

1 Humic acids

Retention Time: 3.33 min



Sample Preparation Details

for HPLC Application ID No.: 19662

Humic Acids using Kinetex C8 50x2.1 mm on ABI LC-MS 4000

PRODUCT DESCRIPTION:

Strata® PAH, 1.5 g / 6 mL, Tubes , 30/Pk

Order No.: 8B-S130-7CH

SOLID PHASE EXTRACTION (SPE) PROCEDURE:

Note: The solvent volumes shown below are for a 1.5 g bed mass.

The solvent volumes will need to be adjusted for a smaller or larger bed mass.

Condition:

Load:

Wash:

Dry:

15 seconds

Elute:

Final Prep and Analysis:

Inject: 0 µL on HPLC Mass Spectrometer (MS) @ 580.4 amu (ambient)

ANALYTES:	Spiked Conc. (ng/mL)	Log P	pKa	% Rec	%RSC (n=0)
1 Humic acids	0				

Note: This method is designed as a convenient starting point for further investigation and can be tailored to meet your extraction goals.
Call your local Phenomenex Representative for assistance in method development and optimization techniques.

©2025 Phenomenex Inc. All rights reserved.

For more information contact your Phenomenex Representative at info@phenomenex.com



Phenomenex products are available worldwide.

www.phenomenex.com.cn

info@phenomenex.com