

HPLC Application

ID No.: 19680

Estrone, Estradiol, and Estriol from Water @ pH 2.0 Strata-X via Kinetex XB-C18 150x4.60mm

Column: Kinetex[®] 2.6 μm XB-C18 100 Å, LC Column 150 x 4.6 mm, Ea

Dimensions: 150 x 4.6 mm ID

Order No: 00F-4496-E0

Elution Type: Gradient

Eluent A: 6.9mM Ammonium Acetate pH 4.0 with 25% Acetonitrile (v/v)

Eluent B: Acetonitrile

Gradient Profile:	Step No.	Time (min)	Pct A	Pct B
	1	0	100	0
	2	10	35	65

Flow Rate: 1.2 mL/min

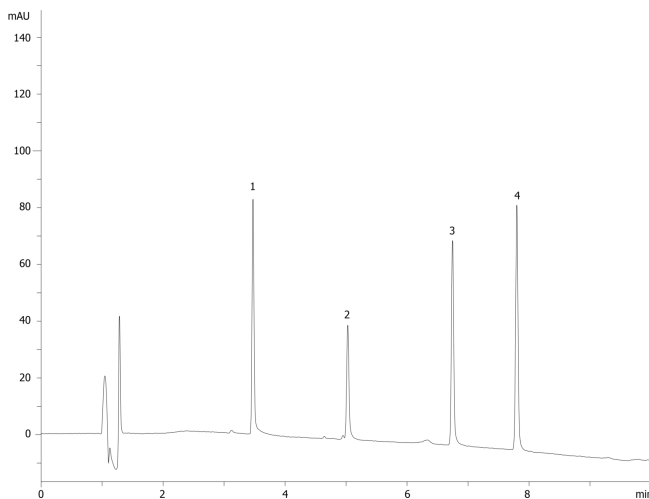
Col. Temp.: ambient

Detection: UV-Vis Abs.-Variable Wave.(UV) @ 230 nm (ambient)

19680



Products used in this application:



ANALYTES:

- 1 Estriol
- 2 Ethyl paraben
- 3 17-beta-Estradiol
- 4 Estrone



Sample Preparation Details

for HPLC Application ID No.: 19680

Estrone, Estradiol, and Estriol from Water @ pH 2.0 Strata-X via Kinetex XB-C18 150x4.60mm

PRODUCT DESCRIPTION:

Strata[™]-X 33 μ m Polymeric Reversed Phase, 200 mg / 6 mL, Tubes , 30/Pk

Order No.: 8B-S100-FCH

SOLID PHASE EXTRACTION (SPE) PROCEDURE:

Note: The solvent volumes shown below are for a 200 mg bed mass.

The solvent volumes will need to be adjusted for a smaller or larger bed mass.

Condition:

Load:

Wash:

Dry:

1 Minute

Elute:

Final Prep and Analysis:

Inject: 0 μ L on HPLC UV-Vis Abs.-Variable Wave.(UV) @ 230 nm (ambient)

ANALYTES:	Spiked Conc. (ng/mL)	Log P	pKa	% Rec	%RSC (n=0)
1 Estriol	30			81	
2 Ethyl paraben	20			100	
3 17-beta-Estradiol	30			98	
4 Estrone	30			88	

Note: This method is designed as a convenient starting point for further investigation and can be tailored to meet your extraction goals. Call your local Phenomenex Representative for assistance in method development and optimization techniques.

©2025 Phenomenex Inc. All rights reserved.

For more information contact your Phenomenex Representative at info@phenomenex.com



Phenomenex products are available worldwide.

www.phenomenex.com.cn

info@phenomenex.com