

HPLC Application

ID No.: 19718

Lansoprazole (Prevacid) on Lux Cellulose 4 in Rp

Column: Lux[®] 5 μ m Cellulose-4, LC Column 250 x 4.6 mm, Ea

Dimensions: 250 x 4.6 mm ID

Order No: 00G-4491-E0

Elution Type: Isocratic

Eluent A: Methanol + 0.1 %DEA

Eluent B: 20mMAmBi =0.1%Dea

Gradient Profile:	Step No.	Time (min)	Pct A	Pct B
	1	0	90	10

Flow Rate: 1 mL/min

Col. Temp.: ambient

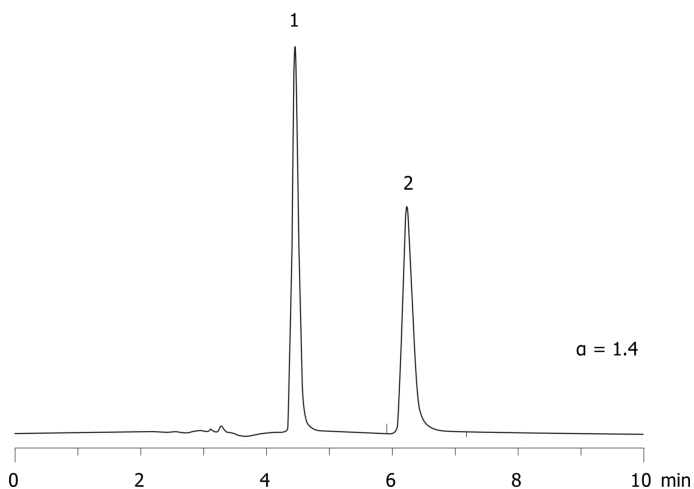
Detection: UV-Vis Abs.-Variable Wave.(UV) @ 220 nm (ambient)

Analyst Note: SecurityGuard[™] Guard Cartridge System extends column lifetime.

- SecurityGuard Cartridges, Lux Cellulose-4 4 x 3.0 mm, 10/Pk Part No.: AJ0-8627

- Holder Part No.: KJ0-4282

19718



ANALYTES:

- 1** Lansoprazole
Retention Time: 4.45 min
- 2** Lansoprazole
Retention Time: 6.23 min



Products used in this application:

