

HPLC Application

ID No.: 19725

Purification of Bivalirudin (1% Loading) on Luna 10u-PREP C18(2)

Column: Luna® 10 µm PREP C18(2) 100 Å, LC Column 250 x 4.6 mm, Ea

Dimensions: 250 x 4.6 mm ID

Order No: 00G-4324-E0

Elution Type: Gradient

Eluent A: 0.1% TFA in Water

Eluent B: 0.1% TFA in Acetonitrile

| Gradient Profile: | Step No. | Time (min) | Pct A | Pct B |
|--------------------------|-----------------|-------------------|--------------|--------------|
| | 1 | 0 | 85 | 15 |
| | 2 | 40 | 65 | 35 |
| | 3 | 45 | 20 | 80 |
| | 4 | 55 | 85 | 15 |

Flow Rate: 1 mL/min

Col. Temp.: ambient

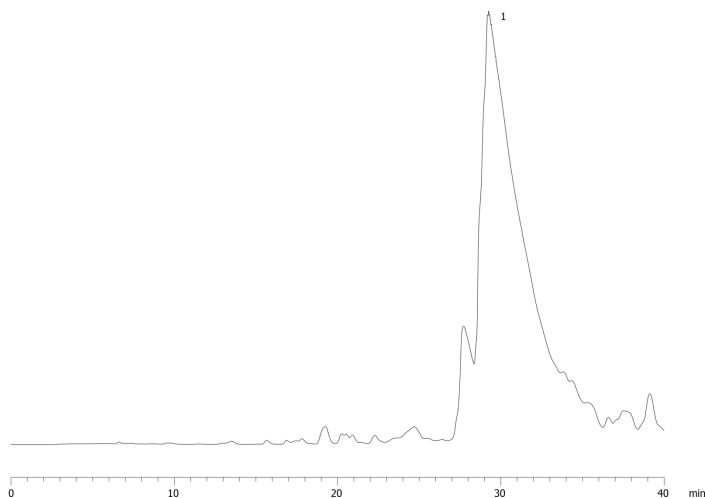
Detection: UV-Vis Abs.-Variable Wave.(UV) @ 220 nm (ambient)

Analyst Note: SecurityGuard™ Guard Cartridge System extends column lifetime.

- SecurityGuard Cartridges, C18 4 x 3.0mm ID, 10/Pk Part No.: AJ0-4287

- Holder Part No.: KJ0-4282

19725



ANALYTES:

1 Bivalirudin



Products used in this application:

