

Hi Temp Stability - Injection on Aeris WIDEPORE after 1050 cycles

Column: Aeris™ 3.6 µm WIDEPORE XB-C18 200 Å, LC Column 50 x 2.1 mm, Ea

Dimensions: 50 x 2.1 mm ID

Order No: 00B-4482-AN

Elution Type: Gradient

Eluent A: Water with 0.1% TFA

Eluent B: Acetonitrile with 0.1% TFA

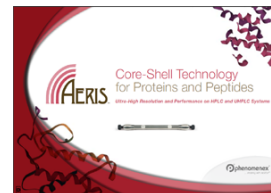
Gradient	Step No.	Time (min)	Pct A	Pct B
Profile:	1	0	97	3
	2	3	97	3
	3	23	35	65

Flow Rate: 0.312 mL/min

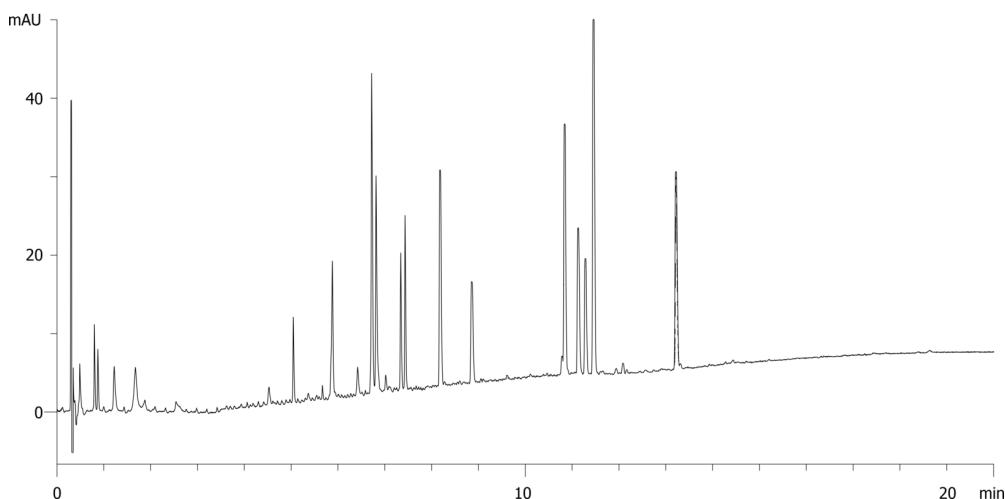
Col. Temp.: 90 °C

Detection: UV-Vis Abs.-Diode Array (PDA) @ (ambient)

Analyst Note: Test was run on a 50x4.6 Aeris WIDEPORE 3.6u XB-C18 run at 1.5 mL/min which is not commercially available at this time. Application was modified to reflect the use of a 2.1 mm column for those that wish to replicate the data.
AppID 19833



Products used in this application:



ANALYTES:

- 1 Apomyoglobin

