

# HPLC Application

ID No.: 19869

## Peptide Ladder-Aeris PEPTIDE 3.6u XB-C18 150x4.6mm

**Column:** Aeris<sup>™</sup> 3.6  $\mu$ m PEPTIDE XB-C18 100  $\text{\AA}$ , LC Column 150 x 4.6 mm, Ea

**Dimensions:** 150 x 4.6 mm ID

**Order No:** 00F-4507-E0

**Elution Type:** Gradient

**Eluent A:** 0.1%FA in Water

**Eluent B:** 0.1%FA in ACN

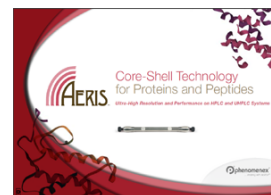
Gradient Profile:	Step No.	Time (min)	Pct A	Pct B
	1	0	95	5
	2	5	65	35
	3	6	5	95
	4	7	5	95

**Flow Rate:** 1.5 mL/min

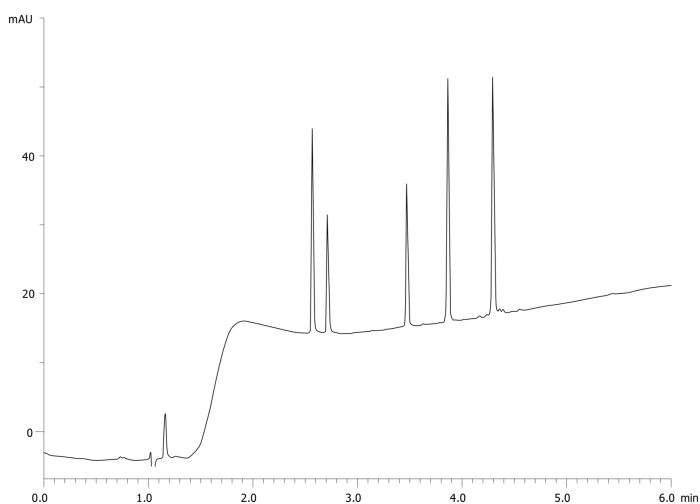
**Col. Temp.:** 40 °C

**Detection:** UV-Vis Abs.-Variable Wave.(UV) @ 214 nm (ambient)

19869



Products used in this application:



### ANALYTES:

- 1 Arg8 Vasopressin
- 2 Dynorphin A
- 3 Angiotensin II
- 4 Methionine enkephalin
- 5 Leucine enkephalin

