

# HPLC Application

ID No.: 19949

## USP Norethindrone, Progesterone and Mestranol on Kinetex 2.6u C8 100x4.60mm on Shimadzu Nexera

**Column:** Kinetex<sup>®</sup> 2.6  $\mu$ m C8 100 Å, LC Column 100 x 4.6 mm, Ea

**Dimensions:** 100 x 4.6 mm ID

**Order No:** 00D-4497-E0

**Elution Type:** Isocratic

**Eluent A:** 50:50 Acetonitrile:Water

Gradient	Step No.	Time (min)	Pct A
<b>Profile:</b>	<b>1</b>	25	100

**Flow Rate:** 1 mL/min

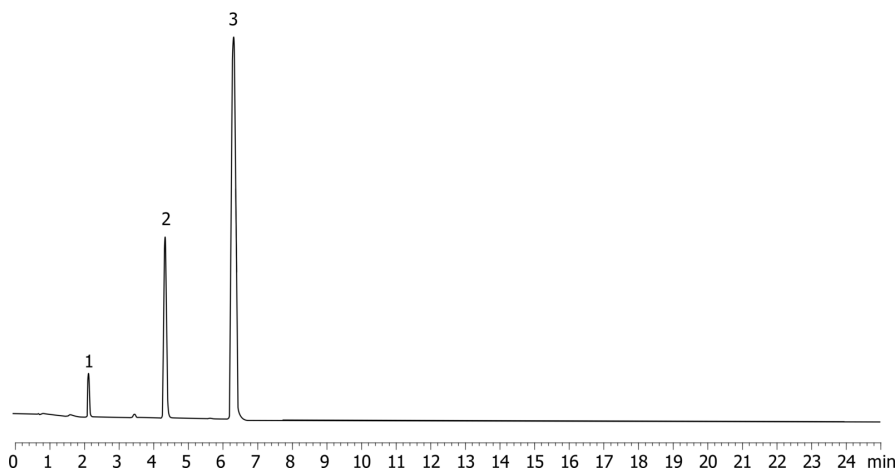
**Col. Temp.:** ambient

**Detection:** UV-Vis Abs.-Variable Wave.(UV) @ 200 nm (ambient)

19949



Products used in this application:



### ANALYTES:

- 1** Norethindrone  
Retention Time: 2.115 min
- 2** Progesterone  
Retention Time: 4.326 min
- 3** Mestranol  
Retention Time: 6.313 min