

# HPLC Application

ID No.: 19969

## Green Tea extracts/catechins on Kinetex 2.6u C18 100x2.10mm @0.36mL/min using Shimadzu Nexera

**Column:** Kinetex® 2.6 µm C18 100 Å, LC Column 100 x 2.1 mm, Ea

**Dimensions:** 100 x 2.1 mm ID

**Order No:** 00D-4462-AN

**Elution Type:** Gradient

**Eluent A:** 0.1% Phosphoric Acid in Water

**Eluent B:** 0.1% Phosphoric Acid in Acetonitrile

<b>Gradient Profile:</b>	<b>Step No.</b>	<b>Time (min)</b>	<b>Pct A</b>	<b>Pct B</b>
	<b>1</b>	0.01	85	15
	<b>2</b>	0.45	85	15
	<b>3</b>	2.68	65	35
	<b>4</b>	3.34	10	90
	<b>5</b>	3.35	85	15
	<b>6</b>	5.34	85	15

**Flow Rate:** 0.36 mL/min

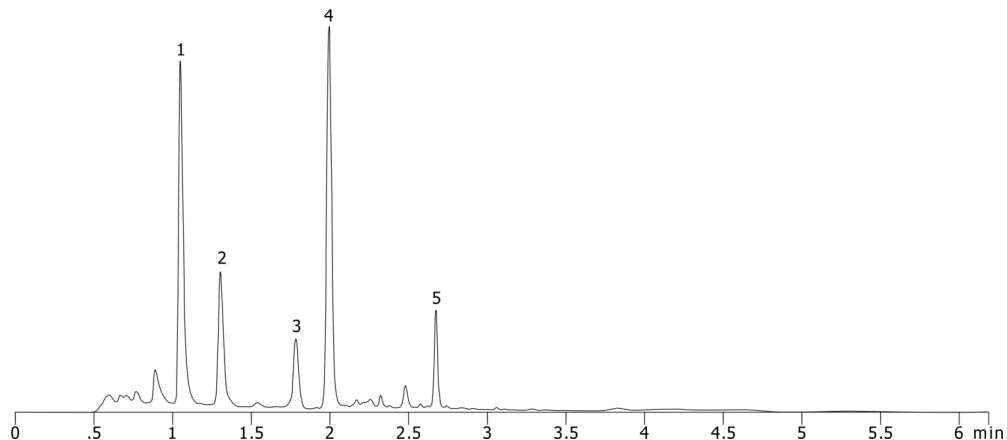
**Col. Temp.:** ambient

**Detection:** UV-Vis Abs.-Variable Wave.(UV) @ 215 nm (ambient)

19969



Products used in this application:



### ANALYTES:

- 1** Epigallocatechin  
Retention Time: 1.047 min
- 2** Catechin  
Retention Time: 1.303 min
- 3** Epicatechin  
Retention Time: 1.782 min
- 4** Epigallocatechin gallate  
Retention Time: 1.993 min
- 5** Epicatechin gallate  
Retention Time: 2.673 min

