

Substituted Chlorophenols on Kinetex 2.6µ Phenyl-Hexyl

Column: Kinetex® 2.6 µm Phenyl-Hexyl 100 Å, LC Column 50 x 4.6 mm, Ea

Dimensions: 50 x 4.6 mm ID

Order No: 00B-4495-E0

Elution Type: Isocratic

Eluent A: Water

Eluent B: MeOH

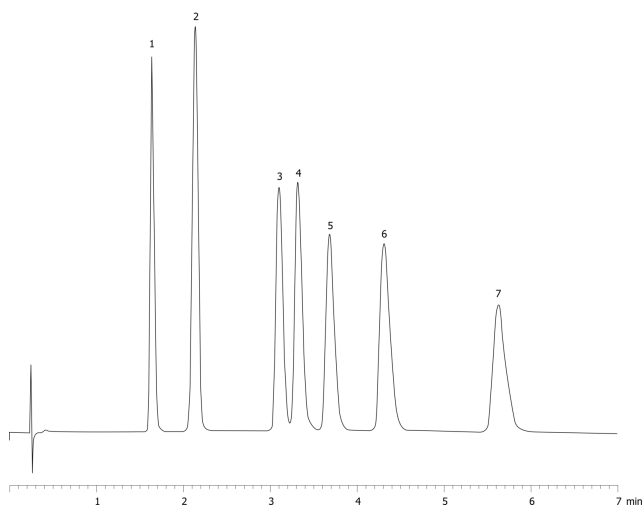
Gradient Profile:	Step No.	Time (min)	Pct A	Pct B
	1	0	55	45

Flow Rate: 1.85 mL/min

Col. Temp.: ambient

Detection: UV-Vis Abs.-Diode Array (PDA) @ 254 nm (ambient)

19989



ANALYTES:

- 1** 4-Chlorophenol
Retention Time: 1.637 min
- 2** 2,6-Dichlorophenol
Retention Time: 2.14 min
- 3** 2,3-Dichlorophenol
Retention Time: 3.099 min
- 4** 2,5-Dichlorophenol
Retention Time: 3.32 min
- 5** 2,4-Dichlorophenol
Retention Time: 3.68 min
- 6** 3,4-Dichlorophenol
Retention Time: 4.31 min
- 7** 3,5-Dichlorophenol
Retention Time: 5.622 min



Products used in this application:

