

Chloramphenicol in Seafood and dairy products by LC/MS/MS

Column: Kinetex® 2.6 µm C18 100 Å, LC Column 50 x 2.1 mm, Ea

Dimensions: 50 x 2.1 mm ID

Order No: 00B-4462-AN

Elution Type: Gradient

Eluent A: Water

Eluent B: Acetonitrile

Gradient Profile:	Step No.	Time (min)	Pct A	Pct B
	1	-2	95	5
	2	0	95	5
	3	2	95	5
	4	2.01	5	95
	5	4.5	5	95

Flow Rate: 0.4 mL/min

Col. Temp.: 20 °C

Detection: Tandem Mass Spec (MS-MS) @ (450 °C)

Detector Info: <a target="_blank"

Analyst Note:

href="https://sciex.com/products/mass-spectrometers?utm_campaign=2019%20application%20search&utm_source=phenomenex&utm_medium=referral">SCIEX<

SecurityGuard™ ULTRA Guard Cartridge System extends column lifetime.

- SecurityGuard ULTRA Cartridges, UHPLC C18 for 2.1mm ID Columns, 3/Pk Part No.: AJ0-8782

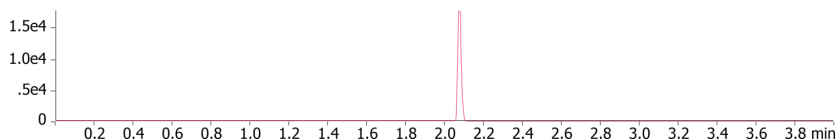
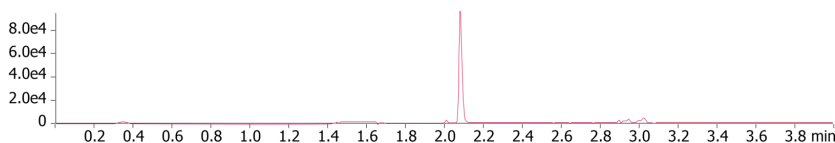
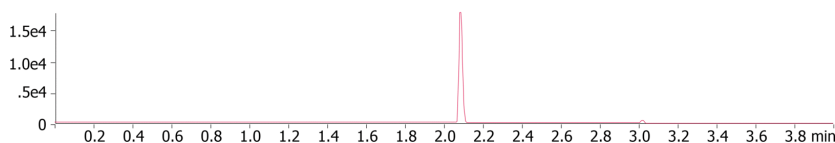
- Holder Part No.: AJ0-9000



Products used in this application:



20026



ANALYTES:

- 1 Chloramphenicol
Retention Time: 2.09 min
- 2 Chloramphenicol
Retention Time: 2.09 min
- 3 Chloramphenicol-d5
Retention Time: 2.08 min



Sample Preparation Details

for HPLC Application ID No.: 20026

Chloramphenicol in Seafood and dairy products by LC/MS/MS

PRODUCT DESCRIPTION:

Strata™-X 33 µm Polymeric Reversed Phase, 60 mg / 3 mL, Tubes , 50/Pk

Order No.: 8B-S100-UBJ

SOLID PHASE EXTRACTION (SPE) PROCEDURE:

Note: The solvent volumes shown below are for a 60 mg bed mass.

The solvent volumes will need to be adjusted for a smaller or larger bed mass.

Condition:

Load:

Homogenize ~100 g of thawed shrimp using blender or tissue homogenizer. Weigh out 5 g of homogenized shrimp and transfer to a 15 mL polypropylene tube. Add 50 µL of d5-Chloramphenicol (IS) solution. Mix thoroughly using a vortex mixer to ensure

Wash:

Dry:

5 minutes @ 10 in Hg Vacuum

Elute:

Final Prep and Analysis:

Inject: 25 µL on HPLC Tandem Mass Spec (MS-MS) @ (450°C)

ANALYTES:		Spiked Conc.	Log P	pKa	% Rec	%RSC
		(ng/mL)				(n=0)
1	Chloramphenicol	0				
2	Chloramphenicol	0				
3	Chloramphenicol-d5	0				

Note: This method is designed as a convenient starting point for further investigation and can be tailored to meet your extraction goals. Call your local Phenomenex Representative for assistance in method development and optimization techniques.

©2025 Phenomenex Inc. All rights reserved.

For more information contact your Phenomenex Representative at info@phenomenex.com



Phenomenex products are available worldwide.

www.phenomenex.com.cn

info@phenomenex.com