

HPLC Application

ID No.: 20230

Omeprazole on Lux 5 μ m Cellulose-2 in RP

Column: Lux[®] 5 μ m Cellulose-2, LC Column 250 x 4.6 mm, Ea
Dimensions: 250 x 4.6 mm ID
Order No: 00G-4457-E0
Elution Type: Isocratic
Eluent A: ACN / 20mM NH₄HCO₃+0.1%DEA (60:40) with None in buffer
Gradient

Step No.	Time (min)	Pct A
1	0	100

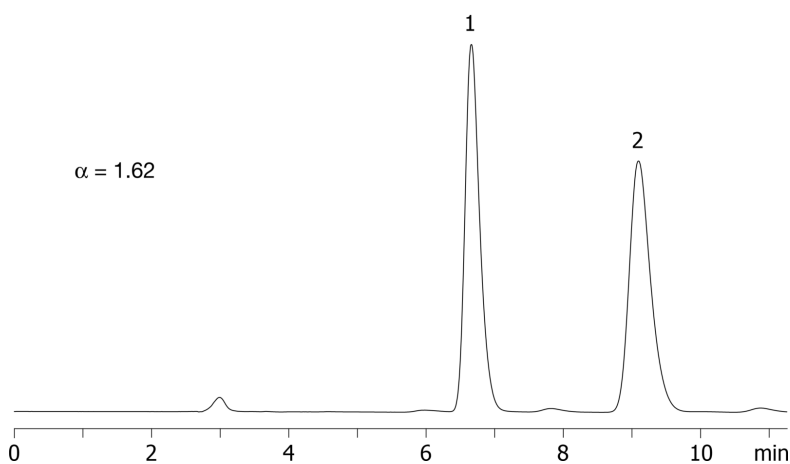
Profile:
Flow Rate: 1 mL/min
Col. Temp.: ambient
Detection: UV-Vis Abs.-Variable Wave.(UV) @ 220 nm (ambient)
Analyst Note: SecurityGuard[™] Guard Cartridge System extends column lifetime.

- SecurityGuard Cartridges, Lux Cellulose-2, 4 x 3.0mm ID, 10/Pk Part No.: AJ0-8366
- Holder Part No.: KJ0-4282

20230



Products used in this application:



ANALYTES:

- 1 Omeprazole
Retention Time: 6.66 min
- 2 Omeprazole
Retention Time: 9.1 min