

Thalidomide on Lux 5µm Cellulose-2 in RP

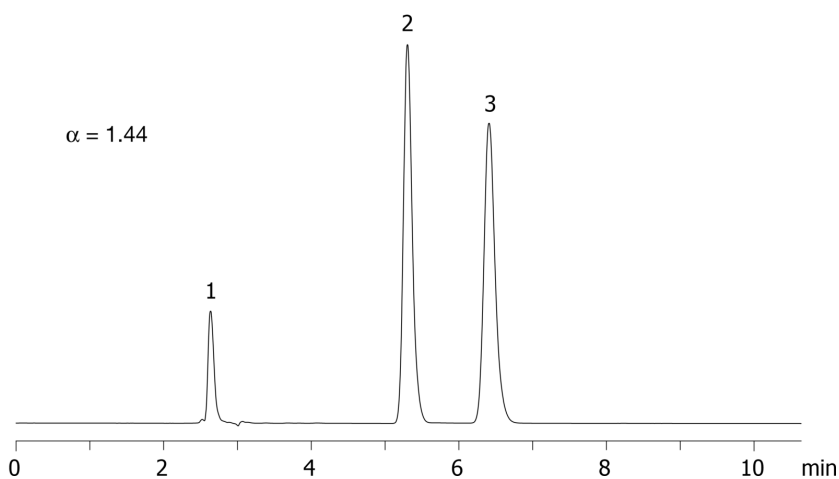
Column: Lux® 5 µm Cellulose-2, LC Column 250 x 4.6 mm, Ea
Dimensions: 250 x 4.6 mm ID
Order No: 00G-4457-E0
Elution Type: Isocratic
Eluent A: ACN / 20mM NH₄HCO₃+0.1%DEA (60:40) with None in buffer
Gradient

Step No.	Time (min)	Pct A
1	0	100

Profile:
Flow Rate: 1 mL/min
Col. Temp.: ambient
Detection: UV-Vis Abs.-Variable Wave.(UV) @ 220 nm (ambient)
Analyst Note: SecurityGuard™ Guard Cartridge System extends column lifetime.

- SecurityGuard Cartridges, Lux Cellulose-2, 4 x 3.0mm ID, 10/Pk Part No.: AJ0-8366
- Holder Part No.: KJ0-4282

20239

**Products used in this application:****ANALYTES:**

- 1** Thalidomide
Retention Time: 5.3 min
- 2** Thalidomide
Retention Time: 6.41 min

