

HPLC Application

ID No.: 20291

Thalidomide on Lux 5 μ m Cellulose-3 in RP

Column: Lux[®] 5 μ m Cellulose-3, LC Column 250 x 4.6 mm, Ea

Dimensions: 250 x 4.6 mm ID

Order No: 00G-4493-E0

Elution Type: Isocratic

Eluent A: ACN / 20mM NH₄HCO₃+0.1%DEA (30:70) None

Gradient	Step No.	Time (min)	Pct A
Profile:	1	0	100

Flow Rate: 1 mL/min

Col. Temp.: ambient

Detection: UV-Vis Abs.-Variable Wave.(UV) @ 220 nm (ambient)

Analyst Note: SecurityGuard[™] Guard Cartridge System extends column lifetime.

- SecurityGuard Cartridges, Lux Cellulose-3 4 x 3.0 mm, 10/Pk Part No.: AJ0-8622

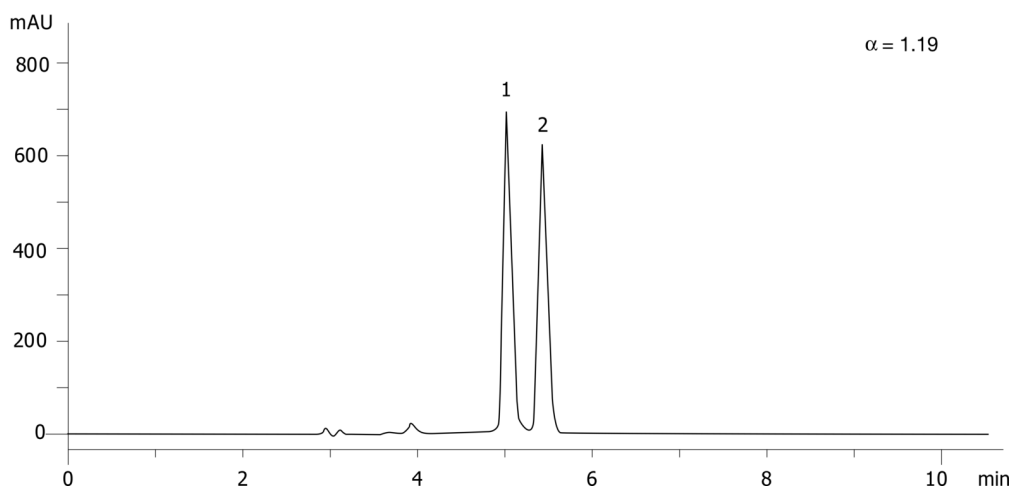
- Holder Part No.: KJ0-4282



Products used in this application:



20291



ANALYTES:

- 1** Thalidomide
Retention Time: 5.04 min
- 2** Thalidomide
Retention Time: 5.45 min