

# HPLC Application

ID No.: 20321

## Cyclophosphamide hydrate on Lux 5 $\mu$ m Cellulose-3 in RP

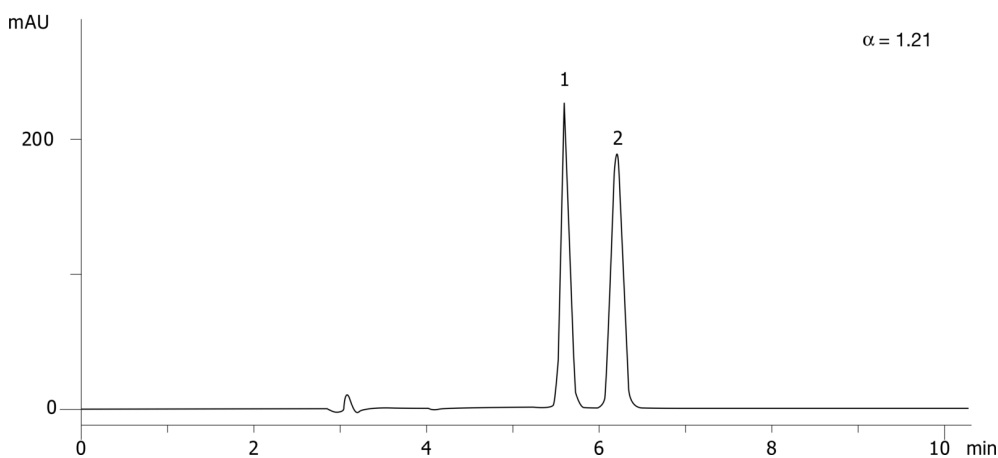
**Column:** Lux<sup>®</sup> 5  $\mu$ m Cellulose-3, LC Column 250 x 4.6 mm, Ea  
**Dimensions:** 250 x 4.6 mm ID  
**Order No:** 00G-4493-E0  
**Elution Type:** Isocratic  
**Eluent A:** ACN / 20mM NH<sub>4</sub>HCO<sub>3</sub>+0.1%DEA (40:60) with None in buffer  
**Gradient**

Step No.	Time (min)	Pct A
1	0	100

**Profile:**  
**Flow Rate:** 1 mL/min  
**Col. Temp.:** ambient  
**Detection:** UV-Vis Abs.-Variable Wave.(UV) @ 220 nm (ambient)  
**Analyst Note:** SecurityGuard<sup>™</sup> Guard Cartridge System extends column lifetime.

- SecurityGuard Cartridges, Lux Cellulose-3 4 x 3.0 mm, 10/Pk Part No.: AJ0-8622
- Holder Part No.: KJ0-4282

20321



### ANALYTES:

- 1** Cyclophosphamide hydrate  
Retention Time: 5.61 min
- 2** Cyclophosphamide hydrate  
Retention Time: 6.2 min



Products used in this application:

