

MMA and Succinic Acid in Human Serum on Gemini C18, 3u, 100x3 mm

Column: Gemini® 3 µm C18 110 Å, LC Column 100 x 3 mm, Ea
Dimensions: 100 x 3 mm ID
Order No: 00D-4439-Y0
Elution Type: Gradient
Eluent A: 0.1% Formic Acid in DI H2O
Eluent B: 0.1% Formic Acid + 10 mM Ammonium Formate in MeOH

| Gradient Profile: | Step No. | Time (min) | Pct A | Pct B |
|-------------------|----------|------------|-------|-------|
| | 1 | 0 | 85 | 15 |
| | 2 | 1.5 | 5 | 95 |
| | 3 | 2.5 | 5 | 95 |
| | 4 | 2.51 | 85 | 15 |
| | 5 | 4.5 | 85 | 15 |



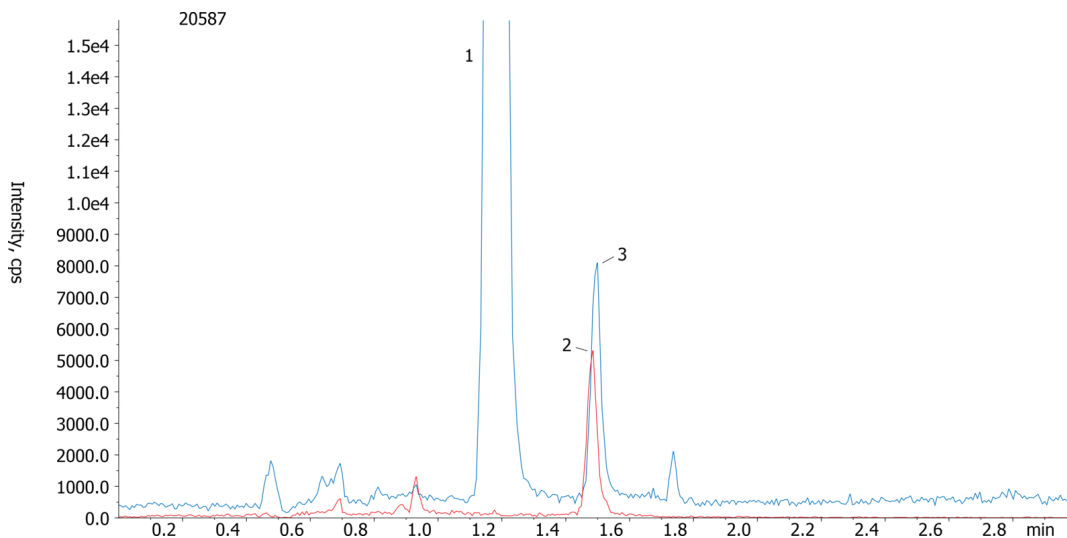
Products used in this application:



Flow Rate: 700 µL/min
Col. Temp.: 40 °C
Detection: Tandem Mass Spec (MS-MS) @ (ambient)

Detector Info: SCIEX SecurityGuard™ Guard Cartridge System extends column lifetime.

Analyst Note:
 - SecurityGuard Cartridges, Gemini C18 4 x 2.0mm ID, 10/PK Part No.: AJ0-7596
 - Holder Part No.: KJ0-4282



ANALYTES:

- 1 Succinic acid
Retention Time: 1.16 min
- 2 Methylmalonic acid-d3
Retention Time: 1.48 min
- 3 Methylmalonic acid
Retention Time: 1.5 min

