

## Yarra 3µm SEC-3000 High Salt Loading Study: Albumin and Ig-G

**Column:** Yarra™ 3 µm SEC-3000, LC Column 300 x 7.8 mm, Ea  
**Dimensions:** 300 x 7.8 mm ID  
**Order No:** 00H-4513-K0  
**Elution Type:** Isocratic  
**Eluent A:** 50 mM Sodium Phosphate pH 6.8/ 0.3M Sodium Chloride  
**Gradient**  

Step No.	Time (min)	Pct A
1	0	100

  
**Flow Rate:** 1 mL/min  
**Col. Temp.:** ambient  
**Detection:** UV-Vis Abs.-Variable Wave.(UV) @ 214 nm (ambient)  
**Analyst Note:** Different concentrations of loading:

Injection amount: 20µL

0.5mg/mL-10ug

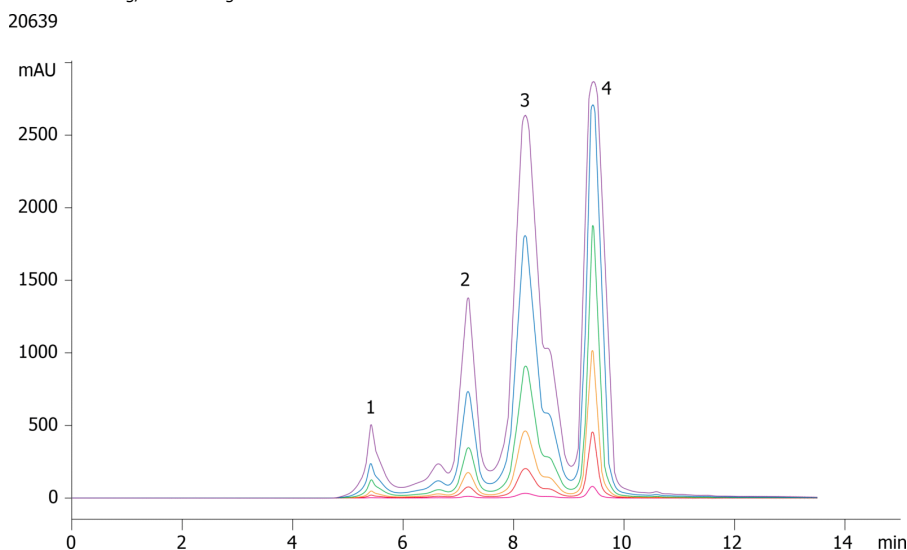
2.5mg/mL-50ug

5mg/mL-100ug

10mg/mL-200ug

25mg/mL-500ug

50mg/mL-1000ug



### ANALYTES:

- 1 IgM  
Retention Time: 5.4 min
- 2 IgG dimer  
Retention Time: 7.2 min
- 3 IgG  
Retention Time: 8.2 min
- 4 Albumin  
Retention Time: 9.2 min



Products used in this application:

