

HPLC Application

ID No.: 20655

Steroid panel by LCMS using Kinetex 2.6u C18 100x3.0mm

Column: Kinetex[®] 2.6 μm C18 100 Å, LC Column 100 x 3 mm, Ea

Dimensions: 100 x 3 mm ID

Order No: 00D-4462-Y0

Elution Type: Gradient

Eluent A: Water

Eluent B: Methanol

Gradient Profile:	Step No.	Time (min)	Pct A	Pct B
	1	0	90	10
	2	2	90	10
	3	3	60	40
	4	7	30	70
	5	10	20	80
	6	10.2	5	95
	7	13	5	95
	8	13.2	90	10
	9	16	90	10

Flow Rate: 0.55 mL/min

Col. Temp.: ambient

Detection: Tandem Mass Spec (MS-MS) @ (ambient)

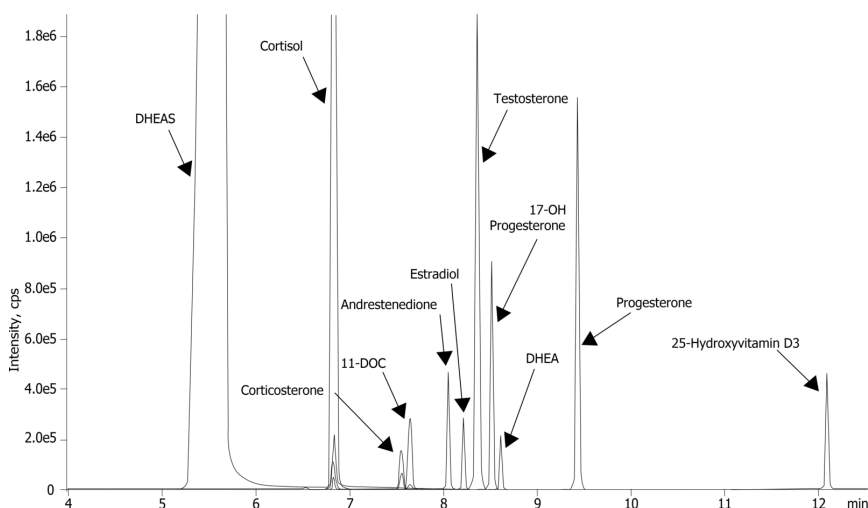
Detector Info:

20655

SCIEX



Products used in this application:



Steroid panel by LCMS using Kinetex 2.6u C18 100x3.0mm

ANALYTES:

- 1 DHEAS
- 2 Cortisol
- 3 Corticosterone
- 4 11-DOC (11-Deoxycortisol)
- 5 Androstenedione
- 6 Estradiol
- 7 Testosterone
- 8 17-Hydroxyprogesterone
- 9 DHEA
- 10 Progesterone
- 11 25 Hydroxy vitamin D3

