

# HPLC Application

ID No.: 20692

## Pain Panel Opiates by LC/MS using Kinetex 2.6u C18 50x2.1mm

**Column:** Kinetex® 2.6 µm C18 100 Å, LC Column 50 x 2.1 mm, Ea

**Dimensions:** 50 x 2.1 mm ID

**Order No:** 00B-4462-AN

**Elution Type:** Gradient

**Eluent A:** 10mM ammonium formate

**Eluent B:** Methanol with 0.1% formic acid

Gradient Profile:	Step No.	Time (min)	Pct A	Pct B
	1	0	95	5
	2	3	5	95
	3	3.1	95	5
	4	5	95	5

**Flow Rate:** 500 µL/min

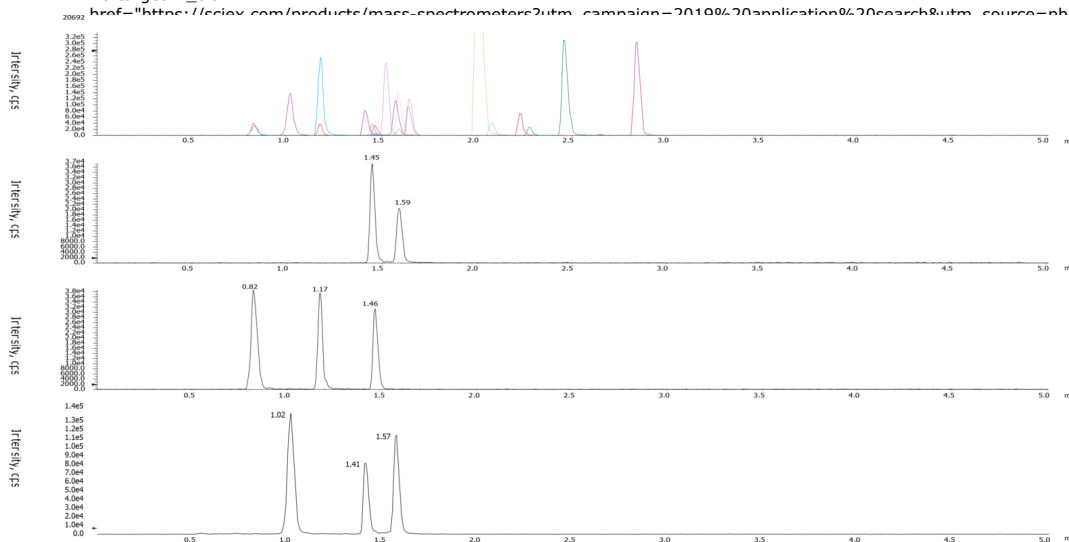
**Col. Temp.:** ambient

**Detection:** Tandem Mass Spec (MS-MS) @ (ambient)

**Detector Info:** <a target="\_blank" href="https://sciex.com/products/mass-spectrometers?utm\_campaign=2019%20application%20search&utm\_source=phenomenex&utm\_medium=referral">SCIEX</a>



Products used in this application:



## Pain Panel Opiates by LC/MS using Kinetex 2.6u C18 50x2.1mm

### ANALYTES:

- 1** Morphine
- 2** Oxymorphone
- 3** Hydromorphone
- 4** Codeine
- 5** Norhydrocodone
- 6** Oxycodone
- 7** Noroxycodone
- 8** Hydrocodone
- 9** 6-MAM
- 10** Norfentanyl
- 11** Tramadol
- 12** Meperidine
- 13** Normeperidine
- 14** Norbuprenorphine
- 15** Fentanyl
- 16** Buprenorphine
- 17** Methadone

