

## Tenatoprazole on Lux 5µm Cellulose-2 in RP Elution Mode (20mM NH<sub>4</sub>HCO<sub>3</sub>)

**Column:** Lux® 5 µm Cellulose-2, LC Column 250 x 4.6 mm, Ea

**Dimensions:** 250 x 4.6 mm ID

**Order No:** 00G-4457-E0

**Elution Type:** Isocratic

**Eluent A:** 20mM NH<sub>4</sub>HCO<sub>3</sub>

**Eluent B:** 0.1%FA in CH<sub>3</sub>CN

Gradient Profile:	Step No.	Time (min)	Pct A	Pct B
	1	20	40	60

**Flow Rate:** 1 mL/min

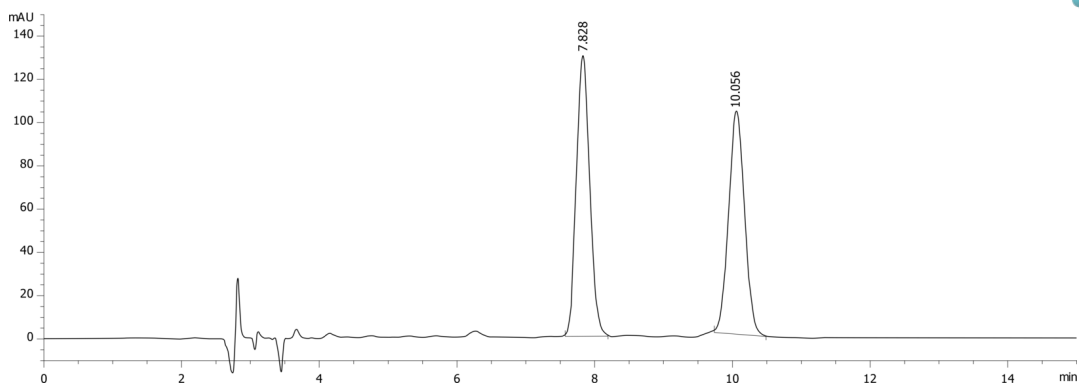
**Col. Temp.:** ambient

**Detection:** UV-Vis Abs.-Variable Wave.(UV) @ 220 nm (ambient)

20721



Products used in this application:



### ANALYTES:

- 1 Tenatoprazole
- 2 Tenatoprazole

