

HPLC Application

ID No.: 20739

Bath Salts analysis using Kinetex 2.6u C18 50x3.0mm

Column: Kinetex® 2.6 µm C18 100 Å, LC Column 50 x 3 mm, Ea

Dimensions: 50 x 3 mm ID

Order No: 00B-4462-Y0

Elution Type: Gradient

Eluent A: 10mM Ammonium Formate

Eluent B: Methanol with 0.1% Formic acid

Gradient Profile:	Step No.	Time (min)	Pct A	Pct B
	1	0	95	5
	2	3	0	100
	3	4	0	100
	4	4.1	95	5

Flow Rate: 500 µL/min

Col. Temp.: ambient

Detection: Tandem Mass Spec (MS-MS) @ (ambient)

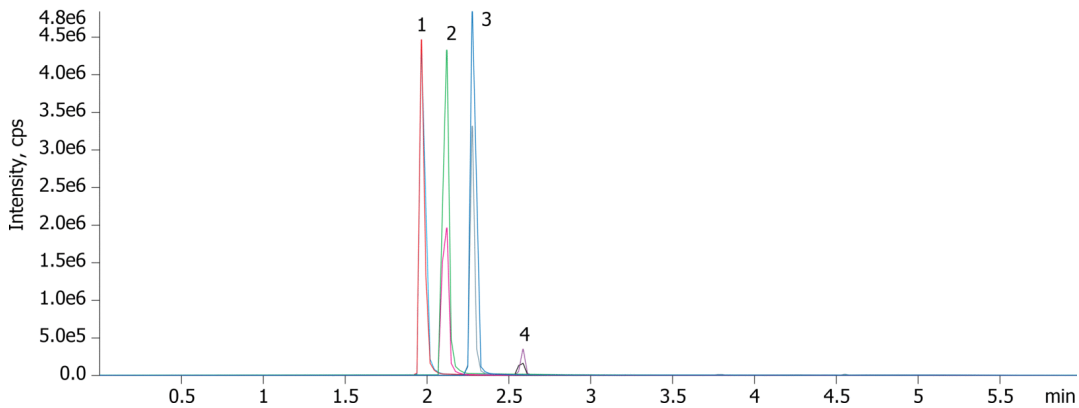
Detector Info: <a target="_blank"

20739

href="https://sciex.com/products/mass-spectrometers?utm_campaign=2019%20application%20search&utm_source=phenomenex&utm_medium=referral">SCIEX<



Products used in this application:



ANALYTES:

- 1** Methamphetamine
Retention Time: 1.12 min
- 2** Methylone
Retention Time: 1.97 min
- 3** Mephedrone
Retention Time: 2.28 min
- 4** MDPV
Retention Time: 2.69 min

