

# HPLC Application

ID No.: 20801

## Flavonoids using Luna 5um C18 250x4.6mm

**Column:** Luna® 5 µm C18(2) 100 Å, LC Column 250 x 4.6 mm, Ea

**Dimensions:** 250 x 4.6 mm ID

**Order No:** 00G-4252-E0

**Elution Type:** Gradient

**Eluent A:** 10mM Ammonium acetate, pH 5.0

**Eluent B:** Acetonitrile / Methanol (9:1)

Gradient Profile:	Step No.	Time (min)	Pct A	Pct B
	1	0	85	15
	2	20	75	25
	3	30	55	45
	4	35	5	95
	5	37	5	95

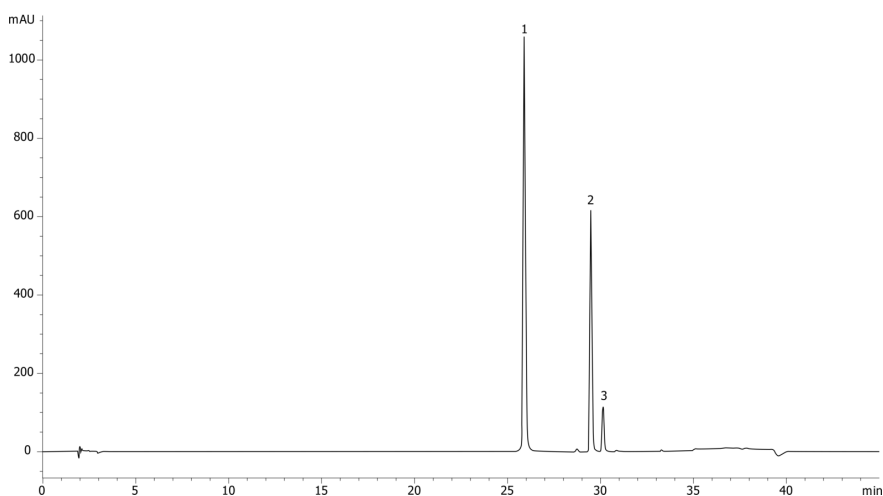
**Flow Rate:** 1500 mL/min

**Col. Temp.:** 40 °C

**Detection:** UV-Vis Abs.-Variable Wave.(UV) @ (ambient)

**Detector Info:** UV 270nm

20801



### ANALYTES:

- 1** Quercetin  
Retention Time: 25.89 min
- 2** Kaempferol  
Retention Time: 29.476 min
- 3** Isorhamnetin  
Retention Time: 30.136 min



Products used in this application:

