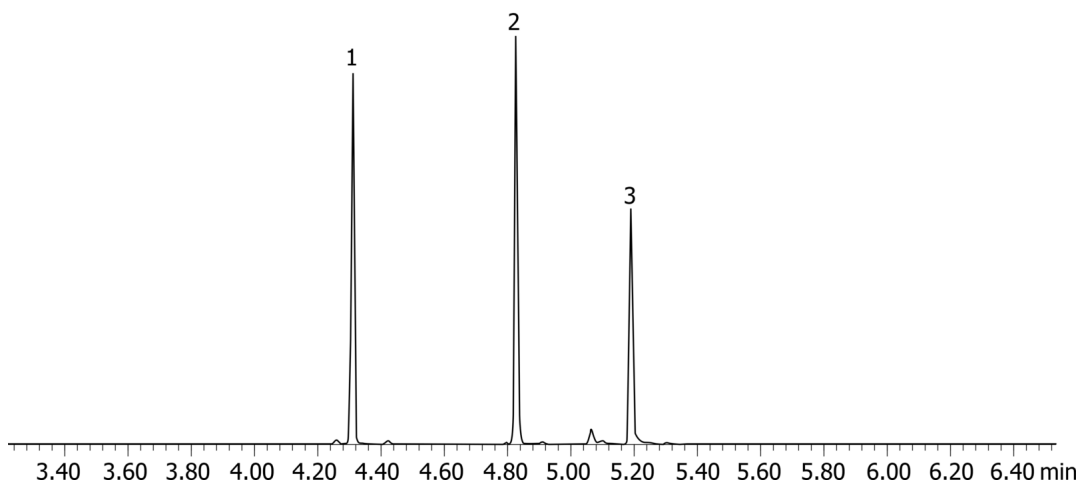


Cannabinoids by GCMS on a ZB-Drug-1**Column:** Zebron[™] ZB-Drug-1, GC Cap. Column 10 m x 0.18 mm x 0.18 μ m, Ea**Phase:** Proprietary Drug Phase**Dimensions:** 10 meters x 0.18 mm x 0.18 μ m**Order No:** 7CD-G023-08**Oven Profile:** 125°C for 1 minute to 320°C at 35°C for 1 minute**Carrier Gas:** Constant Flow Helium, 1.2 mL/min**Injection:** Splitless :1 1 μ L @ 250°C**Detection:** Mass Selective (MSD) (320°C)**Analyst Note:** Sample is derivatized with BSTFA at 70°C for 30 minutes.

Sim mode: THC (371,473,488) THC-OH (371,459,474) THC-COOH (371,386)

**Products used in this application:**

20808

**ANALYTES:**

- 1 THC-TMS
- 2 THC-OH-TMS
- 3 THC-COOH-TMS

