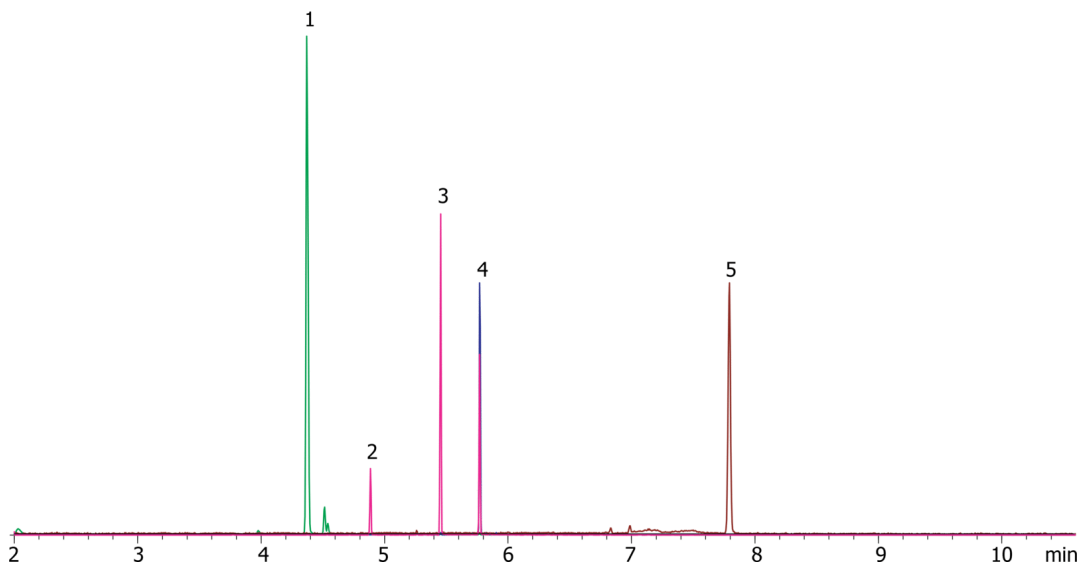


Cannabinoids and synthetic opiates by GCMS on a ZB-5MS**Column:** Zebron™ ZB-5MS, GC Cap. Column 20 m x 0.18 mm x 0.18 µm, Ea**Phase:** 5% Phenyl-Arylene 95% Dimethylpolysiloxane**Dimensions:** 20 meters x 0.18 mm x 0.18 µm**Order No:** 7FD-G010-08**Oven Profile:** 150°C for 1 min to 320°C at 35°C for 5 min**Carrier Gas:** Constant Flow Helium, 1.2 mL/min**Injection:** Splitless :1 1 µL @ 250°C**Detection:** Mass Selective (MSD) (320°C)**Analyst Note:** Sample is derivatized with BSTFA at 70°C for 30 minutes.

Sim mode: Methadone (294), THC (371), THC-OH (371), THC-COOH (473), Buprenorphine (450)

**Products used in this application:**

20810

**ANALYTES:**

- 1 Methadone
- 2 THC
- 3 THC-OH
- 4 THC-COOH
- 5 Buprenorphine

