

# HPLC Application

ID No.: 20838

## Axia scaling using Kinetex 5u C18 100x21.2mm

**Column:** Kinetex<sup>®</sup> 5 $\mu$ m C18 100 Å, AXIA Packed LC Column 100 x 21.2 mm, Ea

**Dimensions:** 100 x 21.2 mm ID

**Order No:** 00D-4601-P0-AX

**Elution Type:** Gradient

**Eluent A:** Water with 0.1% TFA

**Eluent B:** Acetonitrile with 0.1% TFA

Gradient Profile:	Step No.	Time (min)	Pct A	Pct B
	1	0	97	3
	2	10	65	35

**Flow Rate:** 20 mL/min

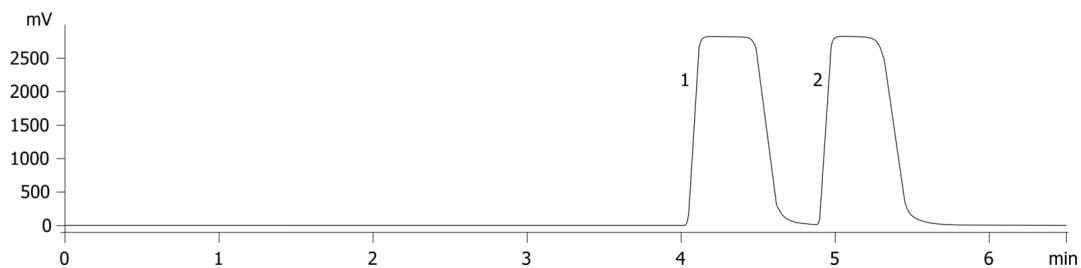
**Col. Temp.:** ambient

**Detection:** UV-Vis Abs.-Variable Wave.(UV) @ 254 nm (ambient)

20838



Products used in this application:



### ANALYTES:

- 1 Caffeine
- 2 Theophylline

