

Pain Panel using Strata-X-Drug B and Kinetex Phenyl-Hexyl 2.6u 50x4.6mm

Column: Kinetex® 2.6 µm Phenyl-Hexyl 100 Å, LC Column 50 x 4.6 mm, Ea

Dimensions: 50 x 4.6 mm ID

Order No: 00B-4495-E0

Elution Type: Gradient

Eluent A: 10mM ammonium formate

Eluent B: 0.1% Formic acid/methanol

Gradient Profile:	Step No.	Time (min)	Pct A	Pct B
	1	0	95	5
	2	4	0	100
	3	5	0	100
	4	5.1	95	5
	5	7	95	5

Flow Rate: 0.6 mL/min

Col. Temp.: ambient

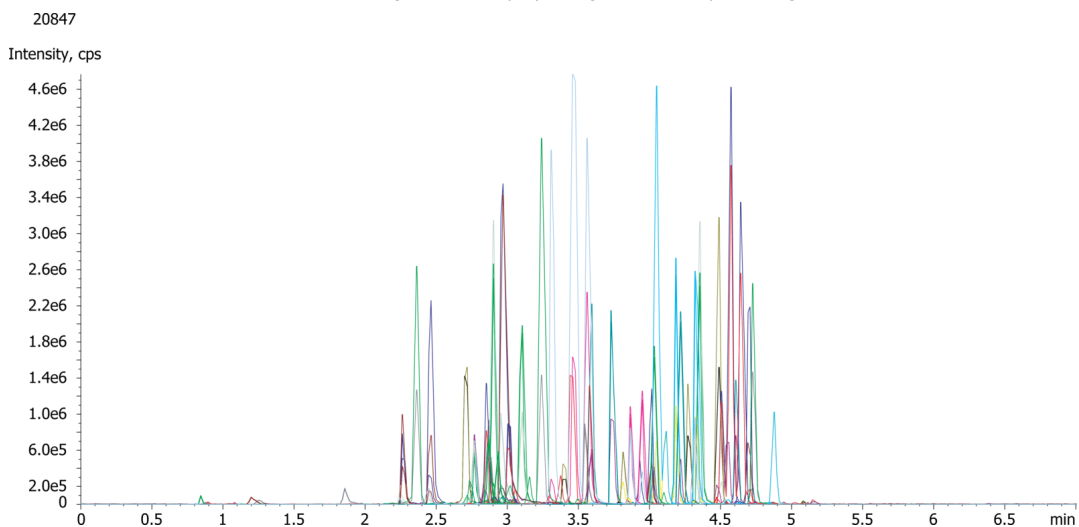
Detection: Mass Spectrometer (MS) @ amu (ambient)

Detector Info: <a target="_blank"

Analyst Note: <ref="https://sciex.com/products/mass-spectrometers?utm_campaign=2019%20application%20search&utm_source=phenomenex&utm_medium=referral">SCIEX</ref>
MS/MS Parameters

Detection: API 5000 MS/MS, TurboIonspray, positive polarity

CAD Gas: 7; GS1, GS2 = 50; curtain gas: 20, ESI spray voltage: 5500; Temp: 650 deg C



Products used in this application:



Pain Panel using Strata-X-Drug B and Kinetex Phenyl-Hexyl 2.6u 50x4.6mm

ANALYTES:

1	Morphine	41	Methadone
2	Morphine-d6	42	Methadone-d3
3	Hydromorphone	43	Midazolam
4	Hydromorphone-d6	44	Lorazepam
5	Naloxone	45	Clonazepam
6	Codeine	46	Hydroxyalprazolam
7	Oxymorphone	47	Oxazepam
8	Naltrexone	48	Flunitrazepam
9	Amphetamine	49	Alprazolam
10	Amphetamine-d5	50	Temazepam
11	6-MAM	51	Nordiazepam
12	Oxycodone	52	Nordiazepam-d5
13	Hydrocodone	53	Diazepam
14	Hydrocodone-d6	54	6-MAM-d3
15	Methamphetamine	55	Methamphetamine-d5
16	MDA		
17	MDMA		
18	MDEA		
19	Norfentanyl		
20	Tramadol		
21	Benzoylcegonine		
22	Benzoylcegonine-d3		
23	Meperidine		
24	Meperidine-d4		
25	Normeperidine		
26	Normeperidine-d4		
27	Meprobamate		
28	Norbuprenorphine		
29	PCP		
30	PCP-D5		
31	Fentanyl		
32	Fentanyl-d5		
33	EDDP		
34	Flurazepam		
35	Norpropoxyphene		
36	Norpropoxyphene-d5		
37	Sufentanil		
38	Buprenorphine		
39	Propoxyphene		
40	Carisoprodol		



Sample Preparation Details

for HPLC Application ID No.: 20847

Pain Panel using Strata-X-Drug B and Kinetex Phenyl-Hexyl 2.6u 50x4.6mm

PRODUCT DESCRIPTION:

Strata[™]-X-Drug B 33 µm Polymeric Strong Cation, 30 mg / 3 mL, Tubes , 50/Pk

Order No.: 8B-S128-TBJ

SOLID PHASE EXTRACTION (SPE) PROCEDURE:

Note: The solvent volumes shown below are for a 30 mg bed mass.

The solvent volumes will need to be adjusted for a smaller or larger bed mass.

Condition:

Load:

Sample Hydrolysis: Measure 200µL Urine (calibrator, control) in a 1.5mL micro centrifuge tube, add 20 µL combined IS (Internal Standard) spiking solution.

Vortex 10-15 secs followed by adding 100µL 0.1M pH 4.0 ammonium acetate buffer to each tube, mix/vortex another 15 secs.

Add 40µL

beta-Glucuronidase solution (100,000 units/mL).

Vortex 10-15 secs.

Incubate for 2 hours in a shaker at 55o C to complete hydrolysis of the glucuronides.

Add 400µl of 0.1% FA (formic acid) followed by vortexing for another 60 secs.

Centrifuge the hydrolyzed samples at appx 21000 g for 10 mins (to separate any proteins). Collect Supernatant

Wash:

Dry:

3 to 4 mins at high vacuum (10" of Hg)

Elute:

Final Prep and Analysis:

Load: Samples from hydrolysis Using b-Glucuronidase as below

To 200 µL Urine (calibrator, control) in a 1.5 mL micro centrifuge tube, add 20 µL combined IS

Inject: 10 µL on HPLC Mass Spectrometer (MS) @ amu (ambient)

ANALYTES:	Spiked Conc. (ng/mL)	Log P	pKa	% Rec	%RSC (n=0)
1 Morphine	25			115	
2 Morphine-d6	500				
3 Hydromorphone	25			110	
4 Hydromorphone-d6	500				
5 Naloxone	25			103	
6 Codeine	25			111	
7 Oxymorphone	25			107	
8 Naltrexone	25			108	
9 Amphetamine	125			99	
10 Amphetamine-d5	2500				
11 6-MAM	2.5			99	
12 Oxycodone	25			113	
13 Hydrocodone	25			113	
14 Hydrocodone-d6	312				
15 Methamphetamine	125			113	
16 MDA	62.5			99	



Sample Preparation Details

for HPLC Application ID No.: 20847

Pain Panel using Strata-X-Drug B and Kinetex Phenyl-Hexyl 2.6u 50x4.6mm

ANALYTES (cont.):	Spiked Conc. (ng/mL)	Log P	pKa	% Rec	%RSC (n=0)
17 MDMA	62.5			102	
18 MDEA	62.5			104	
19 Norfentanyl	2.5			112	
20 Tramadol	25			96	
21 Benzoylcegonine	37.5			100	
22 Benzoylcegonine-d3	750				
23 Meperidine	250			95	
24 Meperidine-d4	3000				
25 Normeperidine	25			108	
26 Normeperidine-d4	500				
27 Meprobamate	50			108	
28 Norbuprenorphine	25			93	
29 PCP	6.25			120	
30 PCP-D5	125				
31 Fentanyl	0.75			110	
32 Fentanyl-d5	100				
33 EDDP	25			113	
34 Flurazepam	25			117	
35 Norpropoxyphene	37.5			103	
36 Norpropoxyphene-d5	750				
37 Sufentanil	0.75			84	
38 Buprenorphine	25			100	
39 Propoxyphene	37.5			98	
40 Carisoprodol	50			112	
41 Methadone	25			101	
42 Methadone-d3	500				
43 Midazolam	25			114	
44 Lorazepam	25			102	
45 Clonazepam	25			117	
46 Hydroxyalprazolam	25			111	
47 Oxazepam	25			99	
48 Flunitrazepam	25			98	
49 Alprazolam	25			101	
50 Temazepam	25			104	
51 Nordiazepam	25			110	
52 Nordiazepam-d5	500				
53 Diazepam	25			114	
54 6-MAM-d3	500				
55 Methamphetamine-d5	2500				

Note: This method is designed as a convenient starting point for further investigation and can be tailored to meet your extraction goals. Call your local Phenomenex Representative for assistance in method development and optimization techniques.

©2025 Phenomenex Inc. All rights reserved.

For more information contact your Phenomenex Representative at info@phenomenex.com



Phenomenex products are available worldwide.

www.phenomenex.com.cn

info@phenomenex.com