

# HPLC Application

ID No.: 20857

## Synthetic cannabinoids using Kinetex 5µm C18 50x2.1mm

**Column:** Kinetex<sup>®</sup> 5µm C18 100 Å, LC Column 50 x 2.1 mm, Ea

**Dimensions:** 50 x 2.1 mm ID

**Order No:** 00B-4601-AN

**Elution Type:** Gradient

**Eluent A:** 10mM Ammonium formate

**Eluent B:** Acetonitrile

Gradient Profile:	Step No.	Time (min)	Pct A	Pct B
	1	0	80	20
	2	4	0	100

**Flow Rate:** 500 mL/min

**Col. Temp.:** ambient

**Detection:** Tandem Mass Spec (MS-MS) @ (ambient)

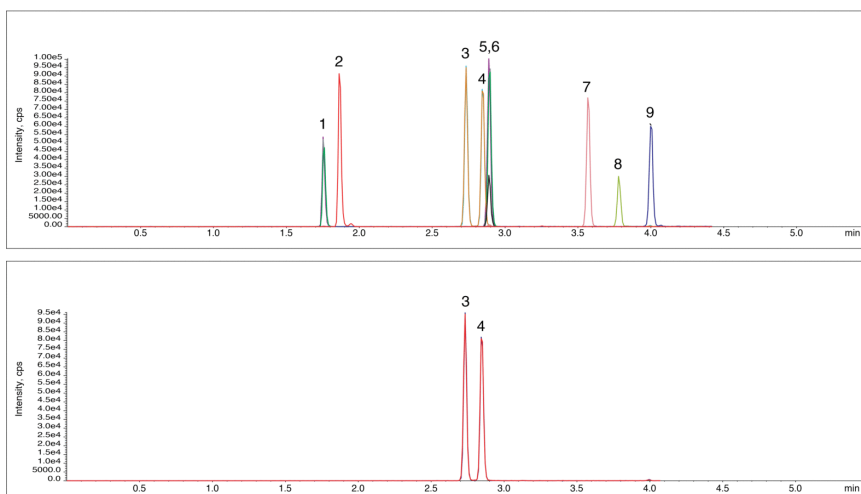
**Detector Info:** <a target="\_blank"

20857

href="https://sciex.com/products/mass-spectrometers?utm\_campaign=2019%20application%20search&utm\_source=phenomenex&utm\_medium=referral">SCIE<



Products used in this application:



### ANALYTES:

- 1 JWH073-BA
- 2 JWH-018-PA
- 3 JWH-073-4HB
- 4 JWH-073-3HB
- 5 AM2201-4OHP
- 6 JWH018-4HP
- 7 AM2201
- 8 JWH-073
- 9 JWH-018

