

# HPLC Application

ID No.: 20896

## Melatonin in commercial formulation on Luna 5u C18(2) 150x4.6mm

**Column:** Luna® 5 µm C18(2) 100 Å, LC Column 150 x 4.6 mm, Ea

**Dimensions:** 150 x 4.6 mm ID

**Order No:** 00F-4252-E0

**Elution Type:** Isocratic

**Eluent A:** 0.25% Phosphoric Acid in Water

**Eluent B:** Acetonitrile

Gradient Profile:	Step No.	Time (min)	Pct A	Pct B
	1	15	80	20

**Flow Rate:** 1.5 mL/min

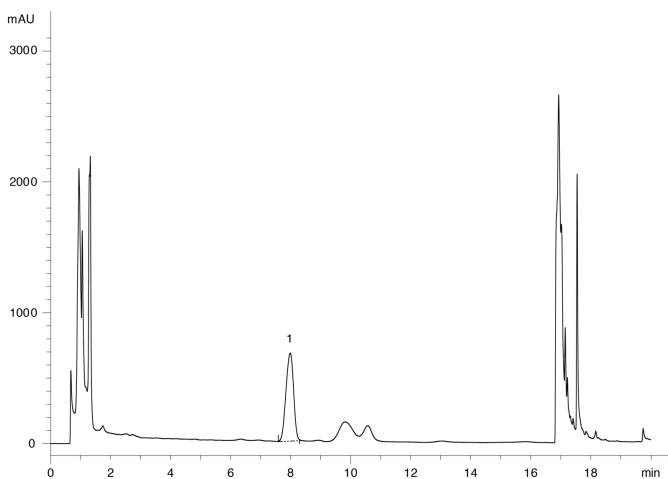
**Col. Temp.:** ambient

**Detection:** UV-Vis Abs.-Variable Wave.(UV) @ 225 nm (ambient)

20896



Products used in this application:



### ANALYTES:

1 Melatonin

Retention Time: 7.985 min