

Cereal based Food - Multi-toxin quantification of Aflatoxins, Ochratoxin A, Trichothecenes, Zearalenone

Column: Kinetex® 2.6 µm C18 100 Å, LC Column 100 x 2.1 mm, Ea
Dimensions: 100 x 2.1 mm ID
Order No: 00D-4462-AN
Elution Type: Gradient
Eluent A: Water with 0.5% Acetic acid and 1mM Ammonium acetate
Eluent B: Methanol with 0.5% Acetic acid and 1mM Ammonium acetate

Gradient Profile:	Step No.	Time (min)	Pct A	Pct B
	1	0	90	10
	2	4	60	40
	3	31	40	60
	4	36	40	60

Flow Rate: 200 µL/min
Col. Temp.: 40 °C
Detection: Tandem Mass Spec (MS-MS) @ (350 °C)

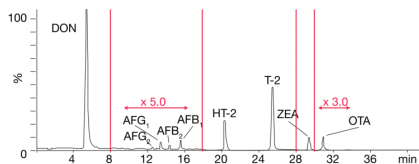
Detector Info: Vertical lines indicate periods ion source polarity switching

20928

Authors reference:

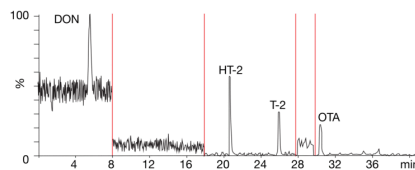
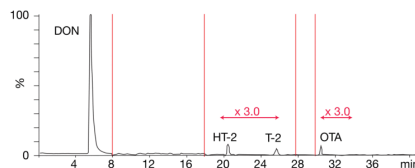
Michele Suman - michele.suman@barilla.com
 Barilla Food Research Labs, via Mantova 166, 43100 Parma, Italy

Veronica M. T. Lattanzio - veronica.lattanzio@ispa.cnr.it
 Institute of Sciences of Food Production (ISPA), National Research Council of Italy (CNR), via Amendola 122/o, 70126 Bari, Italy.



Total ion chromatogram (sum of MRM transitions) of a wheat based crisp bread sample extract spiked with:

750 µg/kg DON; 1 µg/kg AFG2, AFB2; 3 µg/kg AFG1;
 5 µg/kg AFB1; 50 µg/kg HT-2, T-2; 75 µg/kg ZEA;
 3 µg/kg OTA



Chromatograms (MRM transitions) of flour naturally contaminated with:

[top] 898 µg/kg DON; 9 µg/kg HT2; 2 µg/kg T2;
 6 µg/kg OTA (soft wheat)
 [down] 5.3 µg/kg DON; 5.4 µg/kg HT2; 1.5 µg/kg T2; 0.8 µg/kg OTA
 (durum wheat)

ANALYTES:

- 1** Deoxynivalenol
Retention Time: 4.8 min
- 2** Aflatoxin G2
Retention Time: 12.8 min
- 3** Aflatoxin G1
Retention Time: 13.6 min
- 4** Aflatoxin B2
Retention Time: 14.6 min
- 5** Aflatoxin B1
Retention Time: 15.8 min
- 6** HT-2
Retention Time: 20.1 min
- 7** T2-Toxin
Retention Time: 25.3 min
- 8** Zearalenone
Retention Time: 29 min
- 9** OCHRATOXIN A
Retention Time: 31.4 min

©2025 Phenomenex Inc. All rights reserved.

For more information contact your Phenomenex Representative at info@phenomenex.com



Phenomenex products are available worldwide.

www.phenomenex.com.cn

info@phenomenex.com