

HPLC Application

ID No.: 21160

Ibuprofen on Lux 5µm Cellulose-3 by SFC

Column: Lux[®] 5 µm Cellulose-3, LC Column 250 x 4.6 mm, Ea
Dimensions: 250 x 4.6 mm ID
Order No: 00G-4493-E0
Elution Type: Isocratic
Eluent A: CO₂/(Methanol + 0.25% IPA + 0.25% TFA) 90:10 (v/v)
Gradient

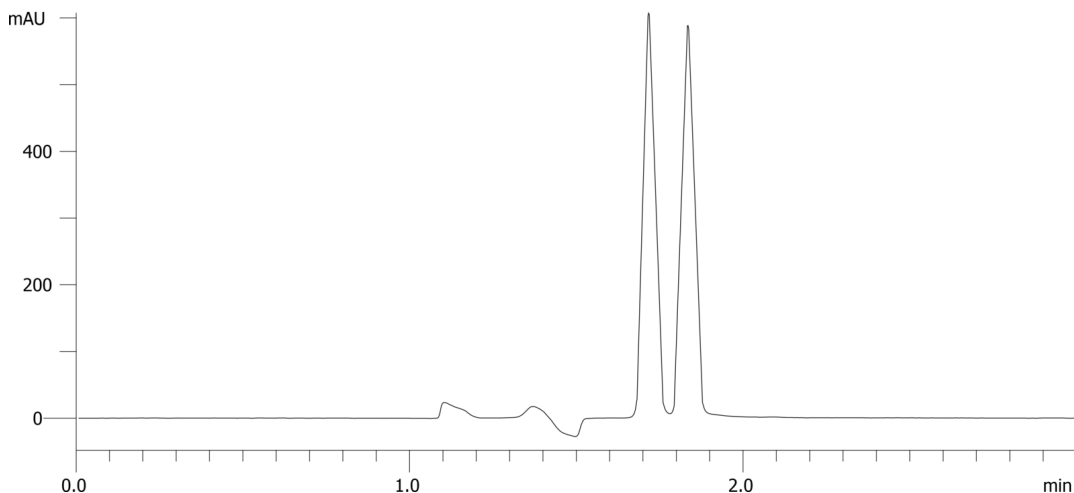
Step No.	Time (min)	Pct A
1	0	100

Profile:
Flow Rate: 3 mL/min
Col. Temp.: 30 °C
Detection: UV-Vis Abs.-Diode Array (PDA) @ 220 nm (30 °C)

Analyst Note: Courtesy of Katrijn De Klerck, Debby Mangelings and Yvan Vander Heyden, Department of Analytical Chemistry and Pharmaceutical Technology, Vrije Universiteit Brussel, Brussels, Belgium.
Results of this analysis yielded: Alpha >1.1 and Resolution >1.5

SecurityGuard[™] Guard Cartridge System extends column lifetime.
- SecurityGuard Cartridges, Lux Cellulose-3, 4 x 3.0mm ID, 10/Pk Part No.: AJ0-8622
- Holder Part No.: KJ0-4282

21160



ANALYTES:

- 1 Ibuprofen
- 2 Ibuprofen



Products used in this application:

