

HPLC Application

ID No.: 21273

Nisoldipine on Lux 5µm Cellulose-2 by SFC

Column: Lux[®] 5 µm Cellulose-2, LC Column 250 x 4.6 mm, Ea

Dimensions: 250 x 4.6 mm ID

Order No: 00G-4457-E0

Elution Type: Isocratic

Eluent A: CO₂/(Methanol + 0.5% IPA) 80:20 (v/v)

| Gradient | Step No. | Time (min) | Pct A |
|-----------------|----------|------------|-------|
| Profile: | 1 | 0 | 100 |

Flow Rate: 3 mL/min

Col. Temp.: 30 °C

Detection: UV-Vis Abs.-Diode Array (PDA) @ 220 nm (30 °C)

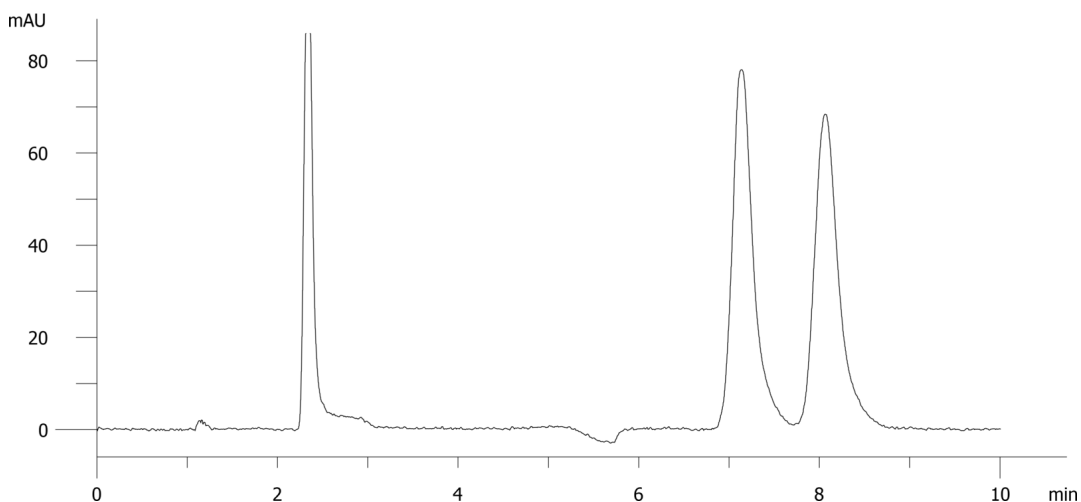
Analyst Note: Courtesy of Katrijn De Klerck, Debby Mangelings and Yvan Vander Heyden, Department of Analytical Chemistry and Pharmaceutical Technology, Vrije Universiteit Brussel, Brussels, Belgium.
Results of this analysis yielded: Alpha >1.1 and Resolution >1.5

SecurityGuard[™] Guard Cartridge System extends column lifetime.

- SecurityGuard Cartridges, Lux Cellulose-2, 4 x 3.0mm ID, 10/Pk Part No.: AJ0-8366

- Holder Part No.: KJ0-4282

21273



ANALYTES:

1 Nisoldipine

2 Nisoldipine



Products used in this application:

