

HPLC Application

ID No.: 21459

Rapid analysis of BSA digest using Kinetex 1.3u C18 50x2.1mm

Column: Kinetex[®] 1.3 μ m C18 100 \AA , LC Column 50 x 2.1mm, Ea

Dimensions: 50 x 2.1 mm ID

Order No: 00B-4515-AN

Elution Type: Gradient

Eluent A: Water with 0.1% TFA

Eluent B: Acetonitrile with 0.1% TFA

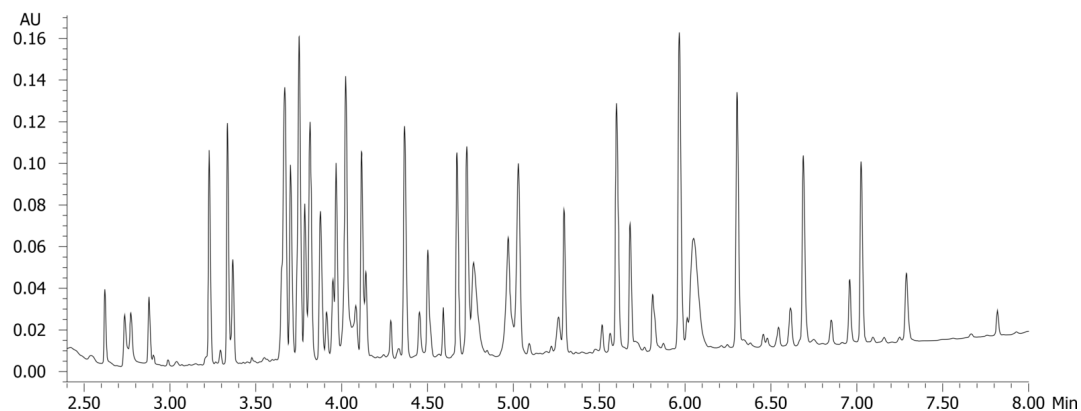
| Gradient Profile: | Step No. | Time (min) | Pct A | Pct B |
|-------------------|----------|------------|-------|-------|
| | 1 | 0 | 95 | 5 |
| | 2 | 1 | 95 | 5 |
| | 3 | 11 | 5 | 95 |
| | 4 | 11.5 | 5 | 95 |
| | 5 | 11.6 | 95 | 5 |

Flow Rate: 0.5 mL/min

Col. Temp.: 30 °C

Detection: UV-Vis Abs.-Diode Array (PDA) @ 210 nm (ambient)

21459



Products used in this application:



ANALYTES:

- 1 Bovine Serum Albumin (BSA)

