

## FMOC-Val-OH on Lux 5 $\mu$ m Cellulose-1 in RP

**Column:** Lux<sup>®</sup> 5  $\mu$ m Cellulose-1, LC Column 250 x 4.6 mm, Ea

**Dimensions:** 250 x 4.6 mm ID

**Order No:** 00G-4459-E0

**Elution Type:** Isocratic

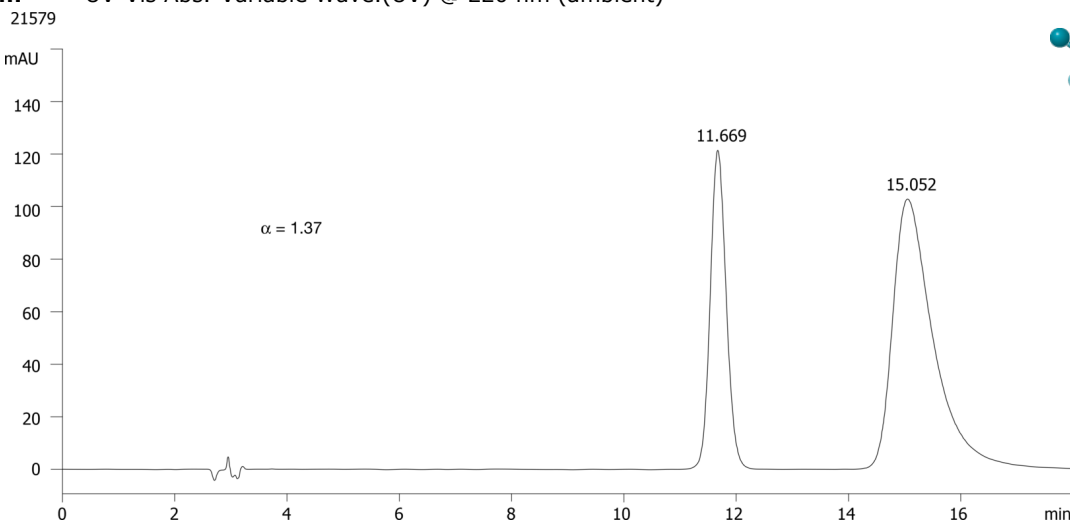
**Eluent A:** ACN / 0.1% TFA (60:40) with TFA (0.1%) in buffer

| Gradient        | Step No. | Time (min) | Pct A |
|-----------------|----------|------------|-------|
| <b>Profile:</b> | <b>1</b> | 0          | 100   |

**Flow Rate:** 1 mL/min

**Col. Temp.:** ambient

**Detection:** UV-Vis Abs.-Variable Wave.(UV) @ 220 nm (ambient)



Products used in this application:



### ANALYTES:

- 1** FMOC-Val-OH  
Retention Time: 11.669 min
- 2** FMOC-Val-OH  
Retention Time: 15.052 min