

HPLC Application

ID No.: 21667

Bitertanol on Lux 5µm Cellulose-1 in NP

Column: Lux[®] 5 µm Cellulose-1, LC Column 250 x 4.6 mm, Ea

Dimensions: 250 x 4.6 mm ID

Order No: 00G-4459-E0

Elution Type: Isocratic

Eluent A: Hexane / IPA (90:10) DEA (0.1%)

Gradient	Step No.	Time (min)	Pct A
Profile:	1	0	100

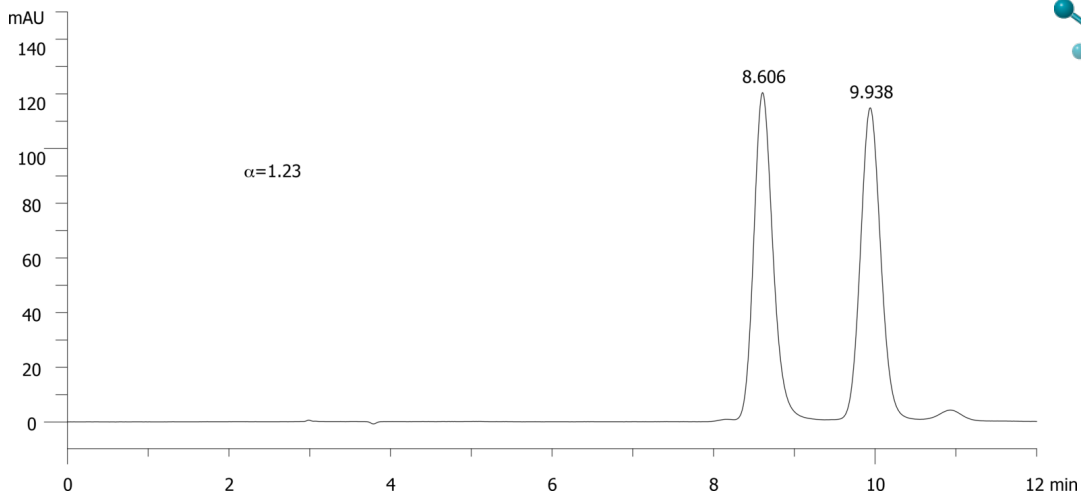
Flow Rate: 1 mL/min

Col. Temp.: ambient

Detection: UV-Vis Abs.-Variable Wave.(UV) @ 220 nm (ambient)
21667



Products used in this application:



ANALYTES:

1 Bitertanol

Retention Time: 8.606 min

2 Bitertanol

Retention Time: 9.938 min

