

HPLC Application

ID No.: 21730

Simeconazole on Lux 5 μ m Cellulose-4 in NP

Column: Lux[®] 5 μ m Cellulose-4, LC Column 250 x 4.6 mm, Ea

Dimensions: 250 x 4.6 mm ID

Order No: 00G-4491-E0

Elution Type: Isocratic

Eluent A: Hexane / IPA (80:20) DEA (0.1%)

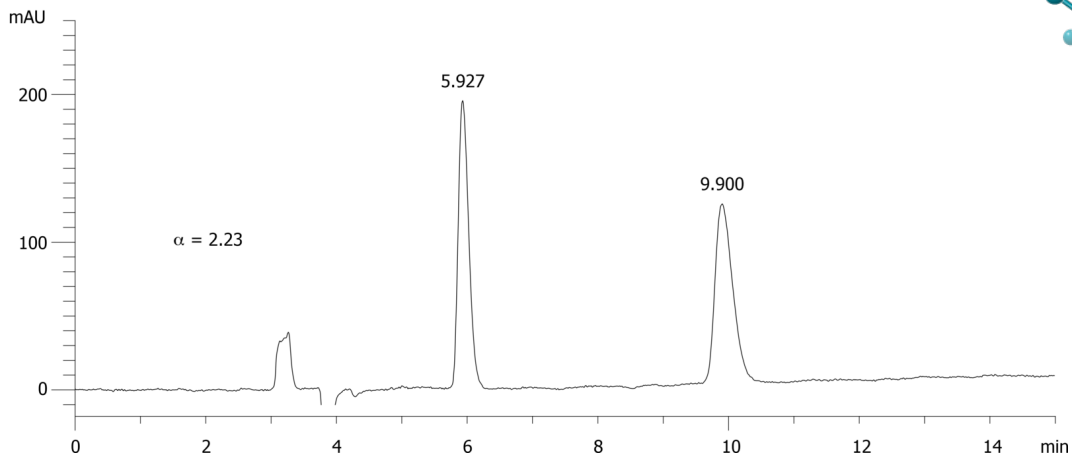
Gradient	Step No.	Time (min)	Pct A
Profile:	1	0	100

Flow Rate: 1 mL/min

Col. Temp.: ambient

Detection: UV-Vis Abs.-Variable Wave.(UV) @ 220 nm (ambient)

21730



Products used in this application:



ANALYTES:

- 1** Simeconazole
Retention Time: 5.927 min
- 2** Simeconazole
Retention Time: 9.9 min

