

HPLC Application

ID No.: 21878

Human Breast Milk TMP & Thiamine by Gemini-NX 3u C18 100x3mm with Impact Plate_1

Column: Gemini® 3 µm NX-C18 110 Å, LC Column 100 x 3 mm, Ea

Dimensions: 100 x 3 mm ID

Order No: 00D-4453-Y0

Elution Type: Gradient

Eluent A: 25nM Na₂HPO₄, 10% methanol

Eluent B: 25mM Na₂HPO₄, 70% methanol

| Gradient Profile: | Step No. | Time (min) | Pct A | Pct B |
|-------------------|----------|------------|-------|-------|
| | 1 | 0 | 3 | 97 |
| | 2 | 0.25 | 25 | 75 |
| | 3 | 0.75 | 25 | 75 |
| | 4 | 3 | 35 | 65 |
| | 5 | 4 | 100 | 0 |
| | 6 | 5 | 100 | 0 |
| | 7 | 5.1 | 3 | 97 |
| | 8 | 8 | 3 | 97 |

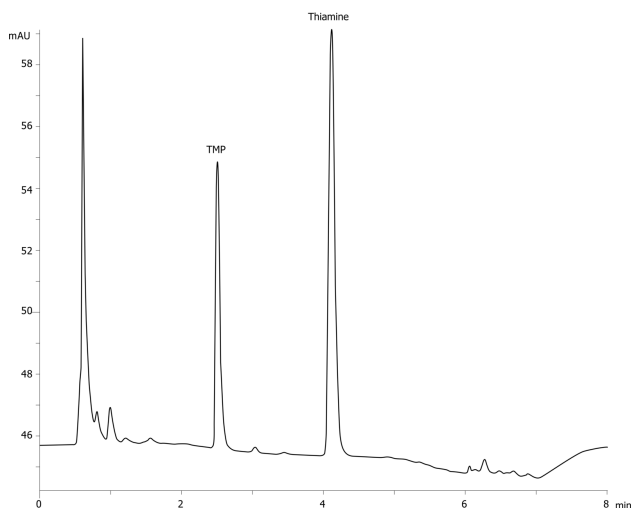
Flow Rate: 0.75 mL/min

Col. Temp.: ambient

Detection: Fluorescence (FLUOR) @ Ex 375 nm (ambient)

Detector Info: Shimadzu ELSD

21878



ANALYTES:

1 TMP

Retention Time: 2.517 min

2 Thiamine

Retention Time: 4.128 min



Products used in this application:



Sample Preparation Details

for HPLC Application ID No.: 21878

Human Breast Milk TMP & Thiamine by Gemini-NX 3u C18 100x3mm with Impact Plate_1

PRODUCT DESCRIPTION:

Impact™ Protein Precipitation, 2mL Square Well Filter Plate, 2/Pk

Order No.: CE0-7565

SOLID PHASE EXTRACTION (SPE) PROCEDURE:

Note: The solvent volumes shown below are for a Proprietary bed mass.

The solvent volumes will need to be adjusted for a smaller or larger bed mass.

Condition:

Load:

Wash:

Dry:

Elute:

Final Prep and Analysis:

Inject: 20 µL on HPLC Fluorescence (FLUOR) @ Ex 375 nm (ambient)

| ANALYTES: | Spiked Conc. (ng/mL) | Log P | pKa | % Rec | %RSC (n=0) |
|------------|-------------------------|-------|-----|-------|---------------|
| 1 TMP | 200 | | | | |
| 2 Thiamine | 200 | | | | |

Note: This method is designed as a convenient starting point for further investigation and can be tailored to meet your extraction goals.
Call your local Phenomenex Representative for assistance in method development and optimization techniques.

©2025 Phenomenex Inc. All rights reserved.

For more information contact your Phenomenex Representative at info@phenomenex.com



Phenomenex products are available worldwide.

www.phenomenex.com.cn

info@phenomenex.com